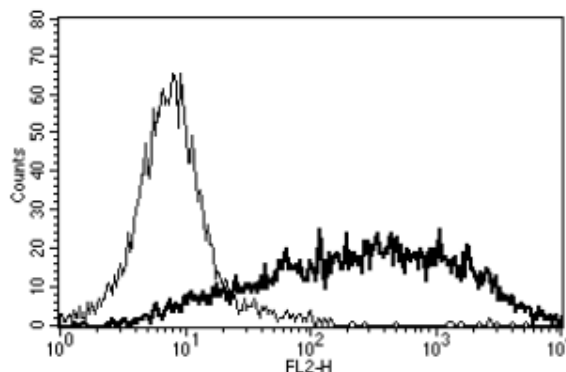


IL2RA

Mouse Anti-Human IL-2R α /CD25 (Clone B-B10) Biotin mAb

Catalog No.	CDM002	Quantity:	100 tests
Alternate Names:	CD25, IDDM10, IL2R, TCGFR		
Description:	The monoclonal antibody recognizes human CD25, the IL-2 receptor alpha chain. The IL-2 receptor alpha (IL2RA) and beta (IL2RB) chains, together with the common gamma chain (IL2RG), constitute the high-affinity IL-2 receptor. Homodimeric alpha chains (IL2RA) result in low-affinity receptor, while homodimeric beta (IL2RB) chains produce a medium-affinity receptor.		
Gene ID:	3559		
Conjugate:	Biotin		
Specificity:	Recognizes the human IL-2 Receptor α chain (IL-2 Ra), a 55 kDa protein. Recognizes only membrane bound IL-2 Ra		
Host:	Mouse		
Isotype:	IgG1		
Immunogen:	PHA activated T cells		
Clone:	B-B10		
Formulation:	Lyophilized from PBS with 1% BSA and 0.1% sodium azide		
Purification:	Ion exchange chromatography		
Reconstitution:	Centrifuge vial prior to opening. Reconstitute with 1 ml sterile, distilled water.		
Applications:	Flow Cytometry		
Application Notes:	Use 10 μ l to label 10 ⁶ cells or 100 μ l of whole blood. The optimal concentration should be determined by the user for each specific application.		
Storage & Stability:	Store at 2-8°C for up to six months after reconstitution. For longer storage, freeze aliquots at -20 to -80°C. Avoid repeated freeze-thaw cycles.		

A typical staining pattern with the B-B10 monoclonal antibody of PHA activated lymphocytes.



NOT FOR HUMAN USE. FOR RESEARCH ONLY. NOT FOR DIAGNOSTIC OR THERAPEUTIC USE.

