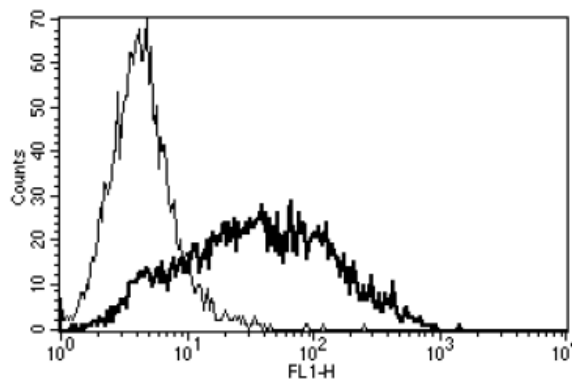


## IL2RA

### Mouse Anti-Human IL-2R $\alpha$ /CD25 (Clone B-F2) mAb

<b>Catalog No.</b>	CDM004	<b>Quantity:</b>	200 tests
<b>Alternate Names:</b>	CD25, IDDM10, IL2R, TCGFR		
<b>Description:</b>	The monoclonal antibody recognizes human CD25, the IL-2 receptor alpha chain. The IL-2 receptor alpha (IL2RA) and beta (IL2RB) chains, together with the common gamma chain (IL2RG), constitute the high-affinity IL-2 receptor. Homodimeric alpha chains (IL2RA) result in low-affinity receptor.		
<b>Concentration:</b>	100 tests/ml		
<b>Gene ID:</b>	3559		
<b>Conjugate:</b>	Unconjugated		
<b>Specificity:</b>	Recognizes the human IL-2 Receptor $\alpha$ chain (IL-2 Ra), a 55 kDa protein. Recognizes soluble and membrane bound IL-2 Ra.		
<b>Host:</b>	Mouse		
<b>Isotype:</b>	IgG1		
<b>Immunogen:</b>	PHA activated T cells		
<b>Clone:</b>	B-F2		
<b>Formulation:</b>	Liquid in PBS with 1% BSA and 0.1% sodium azide. Precaution: Sodium azide is a poisonous and hazardous substance which should be handled by trained staff only.		
<b>Purification:</b>	Ion exchange chromatography		
<b>Applications:</b>	Flow Cytometry, Immunohistochemistry.		
<b>Application Notes:</b>	For flow cytometry, use 10 $\mu$ l to label 10 <sup>6</sup> cells or 100 $\mu$ l of whole blood. The optimal concentration should be determined by the user.		
<b>Storage &amp; Stability:</b>	Stable at 2-8°C for 12 months. For longer storage, freeze aliquots at -20 to -80°C. <b>Avoid repeated freeze-thaw cycles.</b>		

A typical staining pattern with the anti-human IL-2 R alpha clone B-F2 monoclonal antibody of PHA activated lymphocytes



NOT FOR HUMAN USE. FOR RESEARCH ONLY. NOT FOR DIAGNOSTIC OR THERAPEUTIC USE.



**Cell Sciences**<sup>®</sup>  
65 Parker Street  
Unit 11  
Newburyport, MA 01950

Toll Free: 888-769-1246  
Phone: 978-572-1070  
Fax: 978-992-0298

E-mail: [info@cellsciences.com](mailto:info@cellsciences.com)  
Website: [www.cellsciences.com](http://www.cellsciences.com)