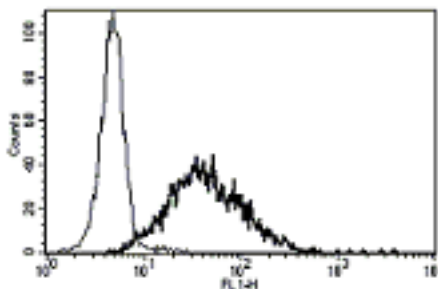


IL2RA

Mouse Anti-Human IL-2 Receptor alpha/CD25 (Clone B-G3) Azide Free mAb

Catalog No.	CDM005	Quantity:	200 µg
Alternate Names:	p55; CD25; IL2R; TCGFR; IDDM10		
Description:	The monoclonal antibody recognizes human IL2Ra/CD25. The IL2R alpha and beta (IL2Rb) chains, together with the common gamma chain (IL2Rg), constitute the high-affinity IL2 receptor. Homodimeric alpha chains (IL2Ra) result in low-affinity receptor, while homodimeric beta (IL2Rb) chains produce a medium-affinity receptor.		
Concentration:	1 µg/µL		
Conjugate:	Unconjugated		
Hybridoma:	Myeloma X63/AG.8653 x Balb/c spleen cells		
Specificity:	Human Interleukin 2 Receptor alpha chain (IL-2Rα), a 55 kDa protein. Recognizes both soluble and membrane-bound human IL-2Rα.		
Host:	Mouse		
Immunogen:	PHA activated T-cells		
Isotype:	IgG1		
Clone:	B-G3		
Formulation:	Liquid in PBS, carrier and preservative free.		
Applications:	Flow Cytometry. Not for use in functional studies.		
Application Notes:	The optimal concentration should be determined by the user for each specific application. No effect on mixed lymphocyte culture.		
Storage & Stability:	Store at 2-8 °C for up to one year, for long term freeze in working aliquots at -20 °C to -80 °C. Avoid repeated freeze-thaw cycles.		

A typical staining pattern with the B-G3 monoclonal antibody of PHA activated lymphocytes



NOT FOR HUMAN USE. FOR RESEARCH ONLY. NOT FOR DIAGNOSTIC OR THERAPEUTIC USE.

