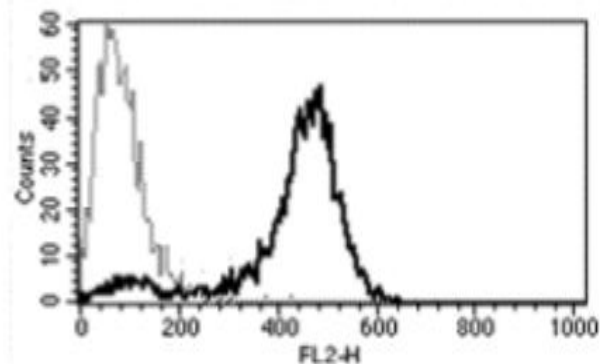


## IL13RA2

### Mouse Anti-Human IL-13R alpha 2 (Clone B-D13) PE mAb

<b>Catalog No.</b>	CDM021	<b>Quantity:</b>	100 tests
<b>Alternate Names:</b>	Interleukin 13 receptor alpha 2, CD213A2, CT19, IL-13R, IL13BP		
<b>Description:</b>	The monoclonal antibody recognizes human IL-13 receptor alpha 2 (IL-13R $\alpha$ 2) which is closely related to IL-13R $\alpha$ 1, a subunit of the IL-13 receptor complex. IL-13R $\alpha$ 2 binds IL-13 with high affinity, but lacks a cytoplasmic domain, and does not appear to function as a signal mediator. It is reported to play a role in the internalization of IL-13.		
<b>Gene ID:</b>	3598		
<b>Conjugate:</b>	PE		
<b>Specificity:</b>	Recognizes human IL-13 R $\alpha$ 2, a 74 kDa protein. Recognizes soluble antigen.		
<b>Host:</b>	Mouse		
<b>Isotype:</b>	IgG1		
<b>Immunogen:</b>	IL-13R $\alpha$ 2 transfected CHO cell line		
<b>Clone:</b>	B-D13		
<b>Formulation:</b>	Lyophilized from PBS with 5% BSA and 0.09% sodium azide. Precaution: Sodium azide is a poisonous and hazardous substance which should be handled by trained staff only.		
<b>Purification:</b>	Ion exchange chromatography		
<b>Reconstitution:</b>	<b>Centrifuge vial prior to opening.</b> Reconstitute with 1 ml of deionized water.		
<b>Applications:</b>	Flow Cytometry		
<b>Application Notes:</b>	Use 10 $\mu$ l to label 10 <sup>6</sup> cells or 100 $\mu$ l of whole blood. The optimal concentration should be determined by the user for each specific application.		
<b>Storage &amp; Stability:</b>	Stable at 2-8°C for six months after reconstitution. <b>DO NOT FREEZE.</b>		

Staining of IL-13R alpha 2 transfected cells with monoclonal antibody clone B-D13



NOT FOR HUMAN USE. FOR RESEARCH ONLY. NOT FOR DIAGNOSTIC OR THERAPEUTIC USE.



**Cell Sciences®**  
65 Parker Street  
Unit 11  
Newburyport, MA 01950

Toll Free: 888-769-1246  
Phone: 978-572-1070  
Fax: 978-992-0298

E-mail: [info@cellsciences.com](mailto:info@cellsciences.com)  
Website: [www.cellsciences.com](http://www.cellsciences.com)