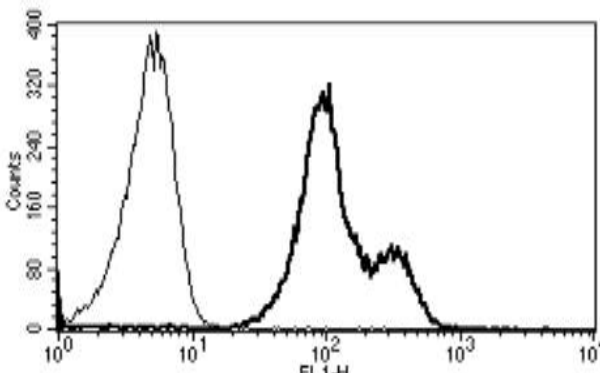


ITGAL

Mouse Anti-Human Integrin alpha L/CD11a (Clone B-B15) mAb

Catalog No.	CDM030	Quantity:	200 tests
Alternate Names:	CD11A, LFA-1, LFA1A, ITGAL		
Description:	The mouse monoclonal antibody recognizes human Integrin alpha L/CD11a. Integrins are heterodimeric integral membrane proteins composed of an alpha chain and a beta chain. This integrin alpha L/CD11a chain and the integrin beta 2 beta chain (ITGB2) combine to form the integrin lymphocyte function-associated antigen-1 (LFA-1), which is expressed on all leukocytes. LFA-1 plays a central role in leukocyte intercellular adhesion through interactions with its ligands, intercellular adhesion molecules (ICAMs) 1-3, and also functions in lymphocyte co-stimulatory signaling.		
Gene ID:	3683		
Concentration:	100 tests/ml		
Conjugate:	Unconjugated		
Specificity:	Recognizes the α L integrin of LFA-1 complex, a 180 kDa protein.		
Host:	Mouse		
Isotype:	IgG1		
Immunogen:	Human PBL		
Clone:	B-B15		
Formulation:	Liquid in PBS + 1% BSA + 0.09% sodium azide.		
Purification:	Ion exchange chromatography		
Applications:	Flow Cytometry		
Application Notes:	Use 10 μ l to label 10^6 cells or 100 μ l of whole blood.		
Storage & Stability:	Stable at 2-8°C for 1 year. For longer storage, freeze in aliquots at -20°C to -80°C. Avoid repeated freeze-thaw cycles.		

A typical staining pattern of lymphocytes with the anti-human Integrin alpha L/CD11a clone B-B15 monoclonal antibody



cellsciences.com

NOT FOR HUMAN USE. FOR RESEARCH ONLY. NOT FOR DIAGNOSTIC OR THERAPEUTIC USE.



Cell Sciences®
65 Parker Street
Unit 11
Newburyport, MA 01950

Toll Free: 888-769-1246
Phone: 978-572-1070
Fax: 978-992-0298

E-mail: info@cellsciences.com
Website: www.cellsciences.com