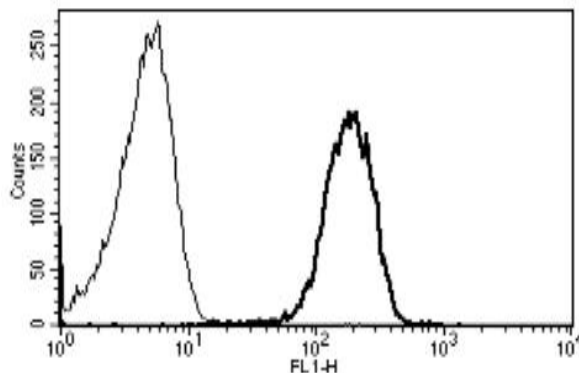


## ICAM3

### Mouse Anti-Human ICAM-3/CD50 (Clone B-R1) Azide Free mAb

<b>Catalog No.</b>	CDM042	<b>Quantity:</b>	200 µg
<b>Alternate Names:</b>	Intercellular adhesion molecule 3, CDW50, ICAM-R		
<b>Description:</b>	The mouse monoclonal antibody recognizes ICAM-3/CD50, a member of the intercellular adhesion molecule (ICAM) family. All ICAM proteins are type I transmembrane glycoproteins, contain 2-9 immunoglobulin-like C2-type domains, and bind to the leukocyte adhesion LFA-1 protein. ICAM-3 is constitutively and abundantly expressed by all leucocytes and may be the most important ligand for LFA-1 in the initiation of the immune response. It functions not only as an adhesion molecule, but also as a potent signaling molecule.		
<b>Gene ID:</b>	3385		
<b>Concentration:</b>	1 mg/ml		
<b>Conjugate:</b>	Unconjugated		
<b>Specificity:</b>	Recognizes human ICAM-3, a 110-140 kDa protein. Recognizes soluble antigen.		
<b>Host:</b>	Mouse		
<b>Isotype:</b>	IgG1		
<b>Immunogen:</b>	U266 cell line		
<b>Clone:</b>	B-R1		
<b>Formulation:</b>	Liquid in PBS. Sterile-filtered. Carrier and preservative free.		
<b>Purification:</b>	Ion exchange chromatography		
<b>Applications:</b>	Flow Cytometry, Immunoprecipitation		
<b>Application Notes:</b>	The optimal concentration should be determined by the user for each specific application.		
<b>Storage &amp; Stability:</b>	Stable at 2-8°C for 12 months. For longer storage, freeze aliquots at -20 to -80°C. <b>Avoid repeated freeze-thaw cycles.</b>		

A typical staining pattern with the B-R1 monoclonal antibody of lymphocytes



# cellsciences.com

NOT FOR HUMAN USE. FOR RESEARCH ONLY. NOT FOR DIAGNOSTIC OR THERAPEUTIC USE.



**Cell Sciences®**  
65 Parker Street  
Unit 11  
Newburyport, MA 01950

Toll Free: 888-769-1246  
Phone: 978-572-1070  
Fax: 978-992-0298

E-mail: [info@cellsciences.com](mailto:info@cellsciences.com)  
Website: [www.cellsciences.com](http://www.cellsciences.com)