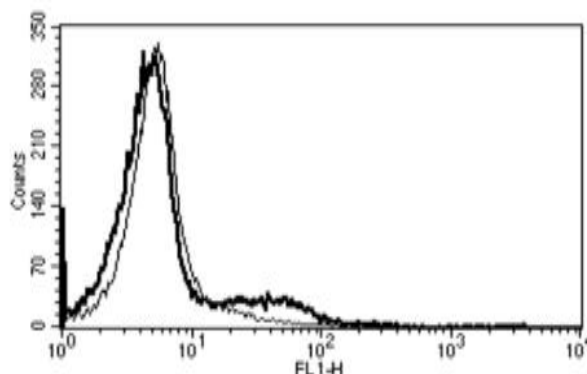


## NCAM1

### Mouse Anti-Human NCAM1/CD56 (Clone B-A19) mAb

<b>Catalog No.</b>	CDM048	<b>Quantity:</b>	200 tests
<b>Alternate Names:</b>	Neural cell adhesion molecule 1, MSK39		
<b>Description:</b>	The monoclonal antibody recognizes human NCAM1/CD56, a cell adhesion protein which is a member of the immunoglobulin superfamily. NCAM1 is involved in cell-to-cell interactions as well as cell-matrix interactions during development and differentiation. It has been shown to be involved in development of the nervous system, and for cells involved in the expansion of T cells and dendritic cells, which play an important role in immune surveillance.		
<b>Concentration:</b>	200 tests/2 ml		
<b>Gene ID:</b>	4684		
<b>Conjugate:</b>	Unconjugated		
<b>Specificity:</b>	Recognizes human NCAM1, a 175-220 kDa protein.		
<b>Host:</b>	Mouse		
<b>Isotype:</b>	IgG1		
<b>Immunogen:</b>	U937 cell line		
<b>Clone:</b>	B-A19		
<b>Hybridoma:</b>	Myeloma X63/AG.8653 x BALB/c spleen cells		
<b>Formulation:</b>	Liquid in PBS with 1% BSA and 0.09% Sodium Azide. Precaution: Sodium Azide is a poisonous and hazardous substance which should be handled by trained staff.		
<b>Purification:</b>	Ion exchange chromatography		
<b>Applications:</b>	Flow Cytometry		
<b>Application Notes:</b>	Use 10 µl to label 10 <sup>6</sup> cells or 100 µl of whole blood. The optimal concentration should be determined by the user for each specific application.		
<b>Storage &amp; Stability:</b>	Stable at 2-8°C for 1 year. For longer storage, freeze aliquots at -20 to -80°C. <b>Avoid repeated freeze-thaw cycles.</b>		

A typical staining pattern with the B-A19 monoclonal antibody of lymphocytes



# cellsciences.com

NOT FOR HUMAN USE. FOR RESEARCH ONLY. NOT FOR DIAGNOSTIC OR THERAPEUTIC USE.



**Cell Sciences®**  
65 Parker Street  
Unit 11  
Newburyport, MA 01950

Toll Free: 888-769-1246  
Phone: 978-572-1070  
Fax: 978-992-0298

E-mail: [info@cellsciences.com](mailto:info@cellsciences.com)  
Website: [www.cellsciences.com](http://www.cellsciences.com)