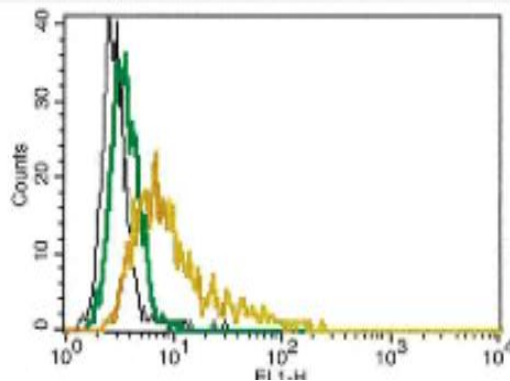


CXCL10

Mouse Anti-Human CXCL10/IP-10 Clone B-C50 FITC mAb

Catalog No.	CDM084	Quantity:	100 tests
Alternate Names:	C7, IFI10, INP10, IP-10, SCYB10, crg-2, gIP-10, mob-1		
Description:	FITC-conjugated Mouse Monoclonal Antibody against Human CXCL10/IP-10 clone B-C50. The CXCL10 protein is a chemokine of the CXC subfamily and ligand for the receptor CXCR3. It is secreted by several cell types in response to IFN-gamma or LPS, including monocytes, endothelial cells, and fibroblasts.		
Gene ID:	3627		
Specificity:	Recognizes both natural and recombinant human IP-10		
Immunogen:	Recombinant human IP-10		
Hybridoma:	Myeloma X63/AG.8653 x BALB/c lymph node cells		
Isotype:	Mouse IgG2a		
Clone:	B-C50		
Conjugate:	FITC		
Formulation:	Phosphate-buffered saline with 5 % BSA and 0.1 % sodium azide Precaution: Sodium azide is a poisonous and hazardous.		
Purification:	Ion exchange chromatography		
Applications:	Suitable for flow cytometry. Use 10 µl to label 10 ⁶ cells or 100 µl of whole blood.		
Storage & Stability:	Store at 2-4°C. Stable for 1 year. For longer storage, freeze aliquots.		

U937 cells 3 days after passaging were activated at a concentration of 2x10⁵ cells/ml with 100 ng/ml IFN-γ for 20 hours (left) or cultured unactivated as controls (right). Brefeldin A, an intracellular blocking agent, was used at 1 µg/ml for 4 to 6 hours. The black, left peak on the graph represents the IgG2b isotype control (B-E4); the green, middle peak shows B-C50 with U937 non-activated cells; and the yellow, right peak represents activated U937 cells marked with B-C50 (10 µl per test for 5x10⁵ cells).



cellsciences.com

NOT FOR HUMAN USE. FOR RESEARCH ONLY. NOT FOR DIAGNOSTIC OR THERAPEUTIC USE.



Cell Sciences®
65 Parker Street
Unit 11
Newburyport, MA 01950

Toll Free: 888-769-1246
Phone: 978-572-1070
Fax: 978-992-0298

E-mail: info@cellsciences.com
Website: www.cellsciences.com