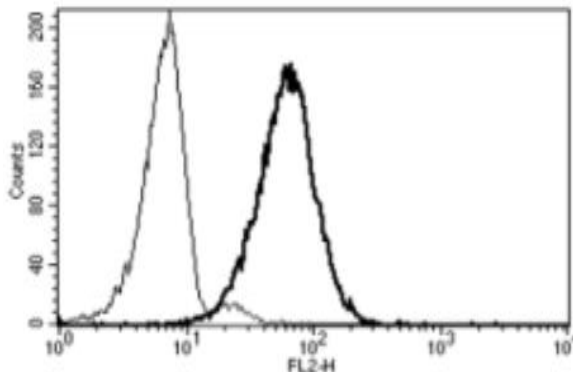


MME

Mouse Anti-Human CD10 Clone B-E3 PE mAb

Catalog No.	CDM144	Quantity:	100 tests
Alternate Names:	CALLA, CD10, NEP, SFE, membrane metallo-endopeptidase		
Description:	Mouse Anti-Human CD10 Clone B-E3 PE monoclonal antibody.		
Concentration:	100 tests / 1 ml		
Gene ID:	4311		
Hybridoma:	Myeloma X63/AG.8653 x BALB/c spleen cells		
Specificity:	Recognises the Common Acute Lymphoblastic Leukemia Antigen (CALLA), a 100 kDa protein		
Host:	Mouse		
Immunogen:	Daudi and Raji cell lines		
Isotype:	IgG2a		
Clone:	B-E3		
Conjugate:	PE		
Formulation:	Lyophilized from a PBS solution with 1% BSA and 0.1% sodium azide. Precaution: Sodium azide is a poisonous and hazardous substance.		
Purification:	Ion exchange chromatography		
Reconstitution:	Reconstitute with 1 ml deionized water.		
Applications:	Flow Cytometry.		
Application Notes:	Use 10 μ l to label 10^6 cells or 100 μ l of whole blood.		
Storage & Stability:	Stable at 2-8°C for 6 months after reconstitution. Do Not Freeze.		

A typical staining pattern with the B-E3 monoclonal antibody of granulocytes



NOT FOR HUMAN USE. FOR RESEARCH ONLY. NOT FOR DIAGNOSTIC OR THERAPEUTIC USE.



Cell Sciences®
65 Parker Street
Unit 11
Newburyport, MA 01950

Toll Free: 888-769-1246
Phone: 978-572-1070
Fax: 978-992-0298

E-mail: info@cellsciences.com
Website: www.cellsciences.com