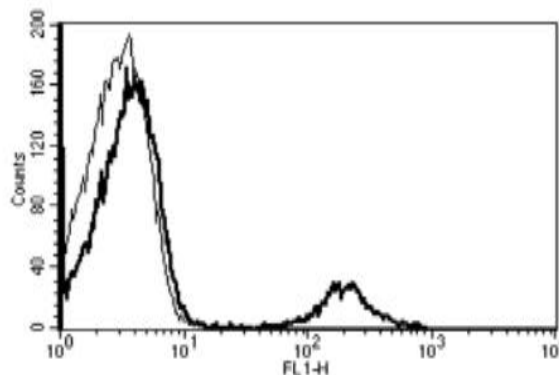


MS4A1

Mouse Anti-Human CD20 (Clone B-H20) mAb

Catalog No.	CDM161	Quantity:	200 tests
Alternate Names:	B1, Bp35, CD20, CVID5, LEU-16, MS4A2, S7		
Description:	The mouse monoclonal antibody recognizes human CD20, a member of the membrane-spanning 4A family. Members of this protein family display unique expression patterns among hematopoietic cells and nonlymphoid tissues. CD20 is a B-lymphocyte surface molecule which plays a role in the development and differentiation of B-cells into plasma cells.		
Gene ID:	931		
Concentration:	100 tests/ml		
Conjugate:	Unconjugated		
Specificity:	Recognizes the B1/Bp35 antigen, a 33-37 kDa protein.		
Host:	Mouse		
Isotype:	IgG2a		
Immunogen:	Chronic Lymphoid Leukemia (CLL) cells		
Clone:	B-H20		
Biological Activity:	Cytotoxic in association with the complement on CD20+ cells.		
Formulation:	Liquid in PBS + 1% BSA + 0.09% sodium azide.		
Applications:	Flow Cytometry		
Application Notes:	Use 10 µl to label 10 ⁶ cells or 100 µl of whole blood. The optimal concentration should be determined by the user for each specific application.		
Storage & Stability:	Stable for 1 year at 2-8°C. For longer storage, freeze aliquots and store at -20 to -80°C. Avoid repeated freeze-thaw cycles.		

A typical staining pattern with the B-H20 monoclonal antibody with lymphocytes



NOT FOR HUMAN USE. FOR RESEARCH ONLY. NOT FOR DIAGNOSTIC OR THERAPEUTIC USE.

