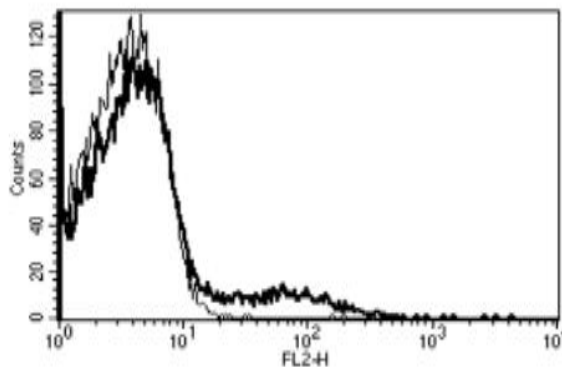


FCER2

Mouse Anti-Human CD23 Clone B-G6 PE mAb

Catalog No.	CDM169	Quantity:	100 tests
Alternate Names:	BLAST-2, CD23, CD23A, CLEC4J, FCE2, IGEBF		
Description:	Mouse Anti-Human CD23 Clone B-G6 Azide Free mAb		
Concentration:	100 tests / 1 ml		
Gene ID:	2208		
Hybridoma:	Myeloma X63/AG.8653 x BALB/c spleen cells		
Specificity:	Recognizes the low affinity IgE receptor (Fce RII), a 45 kDa protein		
Host:	Mouse		
Immunogen:	Daudi cell line		
Isotype:	IgG1		
Clone:	B-G6		
Conjugate:	PE		
Formulation:	Lyophilized from PBS + 1% BSA + 0.09% sodium azide. Precaution: Sodium azide is a poisonous and hazardous substance which should be handled by trained staff only.		
Purification:	Ion exchange chromatography		
Reconstitution:	Reconstitute with 1 ml deionised water		
Applications:	Flow cytometry		
Application Notes:	Use 10 µl to label 10 ⁶ cells or 100 µl of whole blood		
Storage & Stability:	Stable at 2-8°C for 6 months after reconstitution. DO NOT FREEZE.		

A typical staining pattern with the B-G6 monoclonal antibody of lymphocytes



NOT FOR HUMAN USE. FOR RESEARCH ONLY. NOT FOR DIAGNOSTIC OR THERAPEUTIC USE.



Cell Sciences®
65 Parker Street
Unit 11
Newburyport, MA 01950

Toll Free: 888-769-1246
Phone: 978-572-1070
Fax: 978-992-0298

E-mail: info@cellsciences.com
Website: www.cellsciences.com

cellsciences.com



Cell Sciences®
65 Parker Street
Unit 11
Newburyport, MA 01950

Toll Free: 888-769-1246
Phone: 978-572-1070
Fax: 978-992-0298

E-mail: info@cellsciences.com
Website: www.cellsciences.com