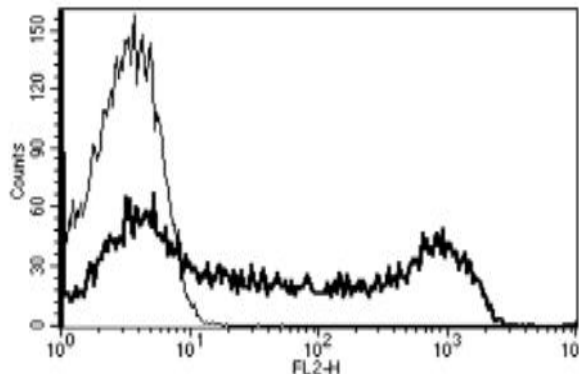


Mouse Anti-Human CD45RA Clone B-C15 PE mAb

Catalog No.	CDM191	Quantity:	100 tests
Description:	Mouse Anti-human CD45RA clone B-C15 PE mAb		
Concentration:	100 tests / 1 ml		
Immunization:	Reh6 cell line		
Hybridoma:	Myeloma X63/AG.8653 x BALB/c spleen cells		
Specificity:	Recognizes the restricted Leucocyte Antigen (LCA) with different isoforms of 205-220 kDa		
Host:	Mouse		
Isotype:	IgG1		
Clone:	B-C15		
Conjugate:	PE		
Formulation:	Lyophilized from PBS + 1% BSA + 0.1% sodium azide. Precaution: Sodium azide is a poisonous and hazardous substance which should be handled by trained staff only.		
Purification:	Ion exchange chromatography		
Reconstitution:	Centrifuge vial prior to opening. Reconstitute with 1 ml deionized water.		
Applications:	Flow Cytometry		
Application Notes:	Use 10 µl to label 10 ⁶ cells or 100 µl of whole blood.		
Storage & Stability:	Store lyophilized product at 2-8°C. Stable at +2-4°C for six months after reconstitution. DO NOT FREEZE.		

A typical staining pattern with the B-C15 monoclonal antibody of lymphocytes.



NOT FOR HUMAN USE. FOR RESEARCH ONLY. NOT FOR DIAGNOSTIC OR THERAPEUTIC USE.



Cell Sciences®
65 Parker Street
Unit 11
Newburyport, MA 01950

Toll Free: 888-769-1246
Phone: 978-572-1070
Fax: 978-992-0298

E-mail: info@cellsciences.com
Website: www.cellsciences.com