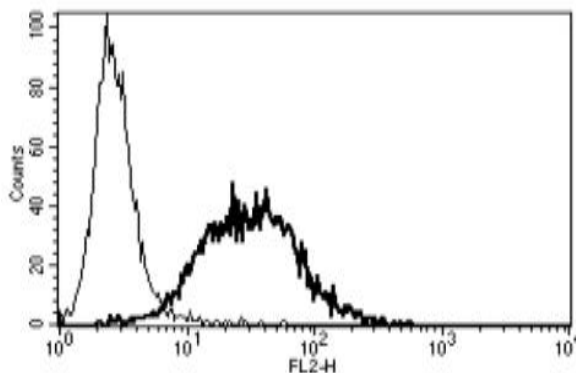


## KIT

### Mouse Anti-Human CD117/c-Kit Clone B-K15 PE mAb

<b>Catalog No.</b>	CDM204	<b>Quantity:</b>	100 tests
<b>Alternate Names:</b>	C-Kit, CD117, PBT, SCFR, v-kit Hardy-Zuckerman 4 feline sarcoma viral oncogene homolog, stem cell factor receptor		
<b>Description:</b>	Mouse Anti-Human CD117/c-Kit Clone B-K15 PE monoclonal antibody		
<b>Concentration:</b>	100 tests / 1 ml		
<b>Gene ID:</b>	3815		
<b>Hybridoma:</b>	Myeloma X63/AG.8653 x BALB/c spleen cells		
<b>Specificity:</b>	Recognizes the Stem Cell Factor Receptor, a 145 kDa protein		
<b>Host:</b>	Mouse		
<b>Immunogen:</b>	Recombinant c-Kit		
<b>Isotype:</b>	IgG1		
<b>Clone:</b>	B-K15		
<b>Conjugate:</b>	PE		
<b>Formulation:</b>	Lyophilized from PBS + 1% BSA + 0.1% sodium azide. Precaution: Sodium azide is a poisonous and hazardous substance which should be handled by trained staff only.		
<b>Purification:</b>	Ion exchange chromatography		
<b>Reconstitution:</b>	<b>Centrifuge vial prior to opening.</b> Add 1 ml sterile distilled water to the vial to fully solubilize the antibody.		
<b>Applications:</b>	Flow Cytometry		
<b>Application Notes:</b>	Use 10 $\mu$ l to label $10^6$ cells or 100 $\mu$ l of whole blood. The optimal concentration should be determined by the user for each specific application.		
<b>Storage &amp; Stability:</b>	Reconstituted antibody is stable for 6 months at 2-4°C. <b>Do Not Freeze.</b>		

A typical staining pattern with the B-K15 monoclonal antibody of TF1 cell line



NOT FOR HUMAN USE. FOR RESEARCH ONLY. NOT FOR DIAGNOSTIC OR THERAPEUTIC USE.



**Cell Sciences®**  
65 Parker Street  
Unit 11  
Newburyport, MA 01950

Toll Free: 888-769-1246  
Phone: 978-572-1070  
Fax: 978-992-0298

E-mail: [info@cellsciences.com](mailto:info@cellsciences.com)  
Website: [www.cellsciences.com](http://www.cellsciences.com)