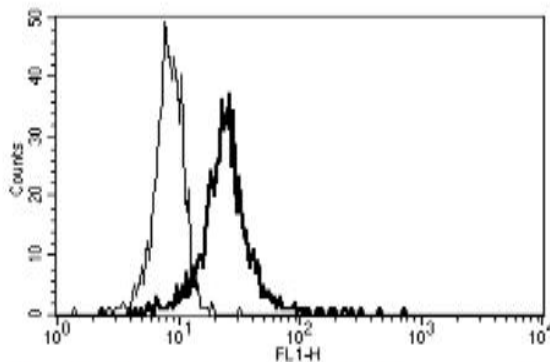


## THBD

### Mouse Anti-Human Thrombomodulin/ CD141 (Clone B-A35) FITC mAb

<b>Catalog No.</b>	CDM213	<b>Quantity:</b>	100 tests
<b>Alternate Names:</b>	CD141; TM; THRM; AHUS6; BDCA3; THPH12		
<b>Description:</b>	The monoclonal antibody recognizes human Thrombomodulin, an endothelial-specific type I membrane receptor that binds thrombin. This binding results in the activation of protein C, which degrades clotting factors Va and VIIIa and reduces the amount of thrombin generated.		
<b>Concentration:</b>	100 tests/ ml		
<b>Gene ID:</b>	7056		
<b>Conjugate:</b>	FITC		
<b>Specificity:</b>	Human thrombomodulin, a 105 kDa protein		
<b>Host:</b>	Mouse		
<b>Isotype:</b>	IgG1		
<b>Immunogen:</b>	TF1 cell line		
<b>Clone:</b>	B-A35		
<b>Formulation:</b>	Liquid in PBS with 5 % BSA and 0.1 % sodium azide. Precaution: Sodium azide is a poisonous and hazardous substance which should be handled by trained staff only.		
<b>Purification:</b>	Ion exchange chromatography		
<b>Applications:</b>	Flow cytometry		
<b>Application Notes:</b>	Use 10 µl to label 10 <sup>6</sup> cells or 100 µl of whole blood. The optimal concentration should be determined by the user for each specific application.		

A typical staining pattern with the B-A35 monoclonal antibody of monocytes



NOT FOR HUMAN USE. FOR RESEARCH ONLY. NOT FOR DIAGNOSTIC OR THERAPEUTIC USE.



**Cell Sciences®**  
65 Parker Street  
Unit 11  
Newburyport, MA 01950

Toll Free: 888-769-1246  
Phone: 978-572-1070  
Fax: 978-992-0298

E-mail: [info@cellsciences.com](mailto:info@cellsciences.com)  
Website: [www.cellsciences.com](http://www.cellsciences.com)