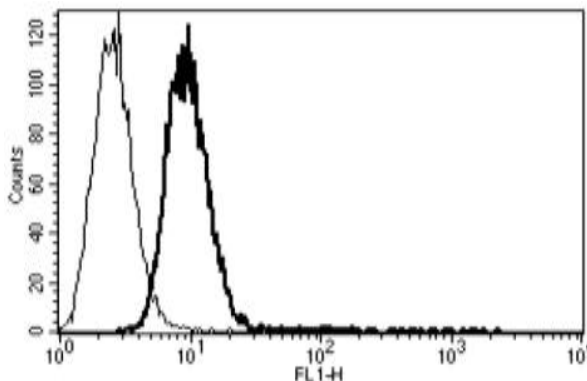


CD34

Mouse Anti-Human CD34 (Class 1) (Clone B-C34) FITC mAb

Catalog No.	CDM216	Quantity:	100 tests
Description:	The monoclonal antibody recognizes the class I epitope of the human CD34 molecule. CD34 is a monomeric cell surface antigen that is selectively expressed on human hematopoietic stem/ progenitor cells.		
Concentration:	100 tests/ 1ml		
Gene ID:	947		
Conjugate:	FITC		
Specificity:	Recognizes the Gp105-120 antigen, a 105-120 kDa protein		
Host:	Mouse		
Isotype:	IgG1		
Immunogen:	KG-1a and TF1 cell lines		
Clone:	B-C34		
Formulation:	Phosphate-buffered saline with 1 % BSA and 0.1 % sodium azide		
Purification:	Ion exchange chromatography		
Applications:	Flow Cytometry		
Application Notes:	Use 10 µl to label 10 ⁶ cells or 100 µl of whole blood.		
Storage & Stability:	Stable at 2-8°C for 1 year. For longer storage, freeze aliquots at -20°C to -80°C. Avoid repeated freeze-thaw cycles.		

A typical staining pattern with the B-C34 monoclonal antibody of KG-1a cell line



NOT FOR HUMAN USE. FOR RESEARCH ONLY. NOT FOR DIAGNOSTIC OR THERAPEUTIC USE.



Cell Sciences®
65 Parker Street
Unit 11
Newburyport, MA 01950

Toll Free: 888-769-1246
Phone: 978-572-1070
Fax: 978-992-0298

E-mail: info@cellsciences.com
Website: www.cellsciences.com