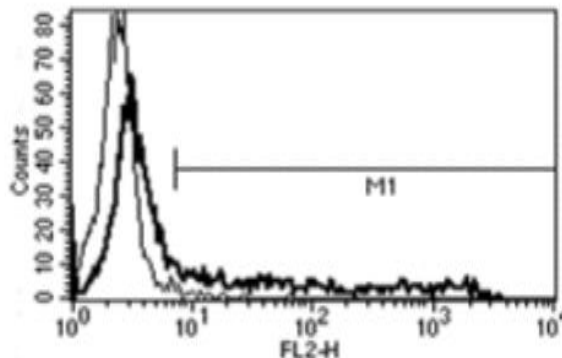


IFNG

Mouse Anti-Human IFN-gamma (Clone B-B1) PE mAb

Catalog No.	CDM258	Quantity:	100 tests
Alternate Names:	IFG, IFI, IFNG		
Description:	The monoclonal antibody recognizes natural and recombinant human IFN- γ . IFN- γ is a soluble cytokine, type II interferon. The encoded protein is secreted by innate and adaptive immune cells. The active protein is a homodimer that binds to the IFN- γ receptor, which triggers a cellular response to viral and microbial infections.		
Gene ID:	3458		
Conjugate:	PE		
Specificity:	Recognizes natural and recombinant human IFN- γ .		
Host:	Mouse		
Isotype:	IgG1		
Immunogen:	Recombinant human IFN- γ		
Clone:	B-B1		
Formulation:	Phosphate-buffered saline with 5 % BSA + 0.1 % sodium azide.		
Purification:	Ion exchange chromatography		
Reconstitution:	Reconstitute with 1 ml deionized water.		
Applications:	Intracellular Flow Cytometry		
Application Notes:	Use 10 μ l of antibody to label 5×10^5 cells. Cells require fixation and permeabilization prior to intracellular staining. The optimal concentration should be determined by the user for each specific application.		
Storage & Stability:	Stable at 2-8°C for six months after reconstitution. DO NOT FREEZE.		

A typical staining pattern with the B-B1 monoclonal antibody of PBL activated with PMA and ionomycin.



NOT FOR HUMAN USE. FOR RESEARCH ONLY. NOT FOR DIAGNOSTIC OR THERAPEUTIC USE.



Cell Sciences®
65 Parker Street
Unit 11
Newburyport, MA 01950

Toll Free: 888-769-1246
Phone: 978-572-1070
Fax: 978-992-0298

E-mail: info@cellsciences.com
Website: www.cellsciences.com