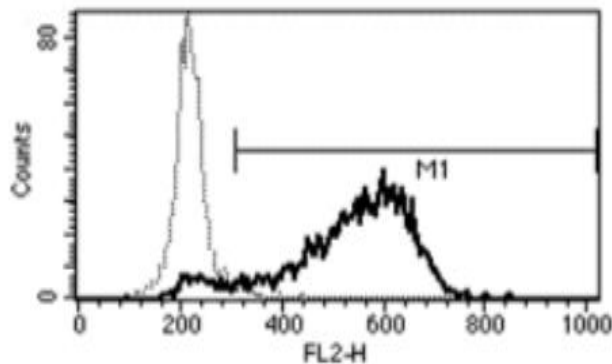


IL1B

Mouse Anti-Human IL-1 β (Clone B-A15) PE mAb

Catalog No.	CDM260	Quantity:	100 tests
Alternate Names:	IL-1; IL1F2; IL1-beta		
Description:	The monoclonal antibody recognizes human IL-1 β , a member of the interleukin 1 cytokine family. This cytokine is produced by activated macrophages as a pro-protein, which is cleaved to its active form by caspase 1. This cytokine is an important mediator of the inflammatory response, and is involved in a variety of cellular activities, including cell proliferation, differentiation, and apoptosis.		
Gene ID:	3553		
Conjugate:	PE		
Specificity:	Natural and recombinant human IL-1 β .		
Host:	Mouse		
Isotype:	IgG1		
Immunogen:	Recombinant human IL-1 β		
Clone:	B-A15		
Formulation:	Lyophilized in phosphate-buffered saline with 1% BSA + 0.1% sodium azide.		
Purification:	Ion exchange chromatography		
Reconstitution:	Reconstitute with 1ml of deionized water.		
Applications:	Intracellular flow cytometry		
Application Notes:	Use 10 μ l of antibody to label 5x10 ⁵ cells. Cells require fixation and permeabilization prior to intracellular staining. The optimal concentration should be determined by the user for each specific application.		
Storage & Stability:	Stable at 2-8°C for six months after reconstitution. DO NOT FREEZE.		

A typical staining pattern with the B-A15 monoclonal antibody of LPS activated MNC



NOT FOR HUMAN USE. FOR RESEARCH ONLY. NOT FOR DIAGNOSTIC OR THERAPEUTIC USE.



Cell Sciences[®]
65 Parker Street
Unit 11
Newburyport, MA 01950

Toll Free: 888-769-1246
Phone: 978-572-1070
Fax: 978-992-0298

E-mail: info@cellsciences.com
Website: www.cellsciences.com