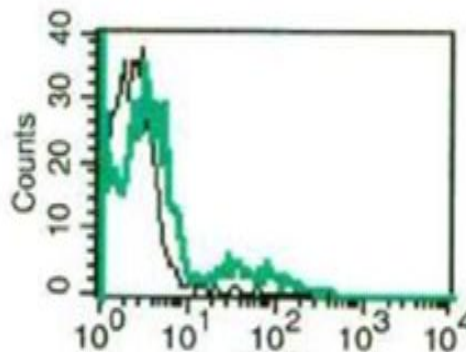


## NCR1

### Mouse Anti-Human NKp46 (Clone B-N40) PE mAb

<b>Catalog No.</b>	CDM300	<b>Quantity:</b>	100 tests
<b>Alternate Names:</b>	Natural cytotoxicity triggering receptor 1, NCR1, NK cell-activating receptor, CD335, LY94, NK-p46, NKP46		
<b>Description:</b>	The monoclonal antibody recognizes human NK-p46/ NCR1.		
<b>Gene ID:</b>	9437		
<b>Conjugate:</b>	PE		
<b>Specificity:</b>	Recognizes human NKp46, a 26.6 kDa protein		
<b>Host:</b>	Mouse		
<b>Isotype:</b>	IgG1		
<b>Immunogen:</b>	Recombinant human NKp46/ NCR1		
<b>Clone:</b>	B-N40		
<b>Formulation:</b>	Lyophilized from PBS with 5 % BSA and 0.1 % sodium azide. <b>Precaution:</b> Sodium azide is a poisonous and hazardous substance which should be handled by trained staff only.		
<b>Purification:</b>	Ion exchange chromatography		
<b>Reconstitution:</b>	Reconstitute with 1 ml deionized water.		
<b>Applications:</b>	Flow Cytometry		
<b>Application Notes:</b>	Use 10 $\mu$ l to label $10^6$ cells or 100 $\mu$ l of whole blood. The optimal concentration should be determined by the user for each specific application.		
<b>Storage &amp; Stability:</b>	Stable at 2-8°C for 6 months after reconstitution. <b>DO NOT FREEZE.</b>		

A typical staining pattern with the B-N40 monoclonal antibody on lymphocytes



**NOT FOR HUMAN USE. FOR RESEARCH ONLY. NOT FOR DIAGNOSTIC OR THERAPEUTIC USE.**



**Cell Sciences®**  
65 Parker Street  
Unit 11  
Newburyport, MA 01950

Toll Free: 888-769-1246  
Phone: 978-572-1070  
Fax: 978-992-0298

E-mail: [info@cellsciences.com](mailto:info@cellsciences.com)  
Website: [www.cellsciences.com](http://www.cellsciences.com)