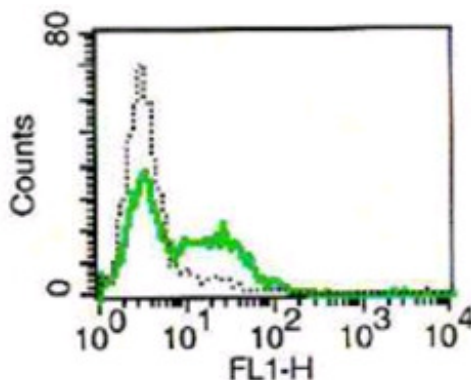


KLRB1

Mouse Anti-Human CD161/KLRB1 (Clone B-D51) Azide Free mAb

Catalog No.	CDM333	Quantity:	200 µg
Alternate Names:	NKR, CLEC5B, NKR-P1, killer cell lectin like receptor B1		
Description:	The mouse monoclonal antibody recognizes CD161/KLRB1. Natural killer (NK) cells are lymphocytes that mediate cytotoxicity and secrete cytokines after immune stimulation. Several genes of the C-type lectin superfamily, including the rodent NKRP1 family of glycoproteins, are expressed by NK cells and may be involved in the regulation of NK cell function. The KLRB1 protein contains an extracellular domain with several motifs characteristic of C-type lectins, a transmembrane domain, and a cytoplasmic domain. The KLRB1 protein is classified as a type II membrane protein because it has an external C terminus.		
Gene ID:	3820		
Concentration:	1 mg/ml		
Conjugate:	Unconjugated		
Specificity:	Recognizes human CD161/KLRB1.		
Host:	Mouse		
Isotype:	IgG1k		
Immunogen:	Recombinant human KLRB1.		
Clone:	B-D51		
Formulation:	Liquid in PBS. Sterile-filtered. Carrier and preservative free.		
Applications:	Flow Cytometry		
Storage & Stability:	Stable at 2-8°C for 1 year. For longer storage, freeze aliquots at -20 to -80°C. Avoid repeated freeze-thaw cycles.		

A typical staining pattern of lymphocytes with the B-D51 monoclonal antibody.



NOT FOR HUMAN USE. FOR RESEARCH ONLY. NOT FOR DIAGNOSTIC OR THERAPEUTIC USE.

