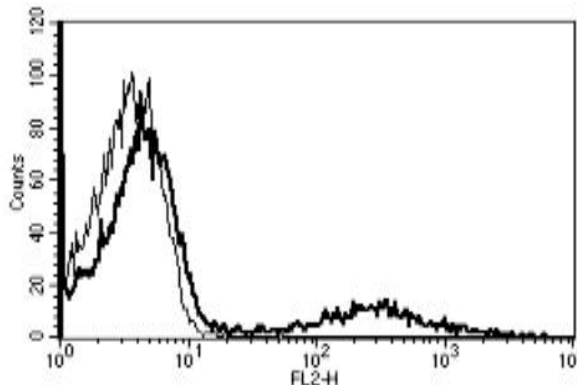


Mouse Anti-Human HLA Class II (DR) Clone B-F1 PE mAb

Catalog No.	CDM338	Quantity:	100 tests
Description:	Mouse Anti-Human HLA Class II (DR) Clone B-F1 PE mAb		
Hybridoma:	Myeloma X63/AG.8653 x BALB/c spleen cells		
Specificity:	Recognizes HLA Class II (DR), 28-33 kDa protein.		
Host:	Mouse		
Immunogen:	Chronic Lymphoid Leukemia (CLL) cells		
Isotype:	IgG1		
Clone:	B-F1		
Conjugate:	PE		
Formulation:	Lyophilized from PBS with 1% BSA and 0.1% sodium azide. Precaution: Sodium azide is a poisonous and hazardous substance which should be handled by trained staff only.		
Purification:	Ion exchange chromatography		
Reconstitution:	Centrifuge vial prior to opening. Reconstitute with 1 ml deionized water. Use 10 µl to label 10^6 cells or 100 µl of whole blood.		
Applications:	Flow cytometry. The optimal concentration should be determined by the user for each specific application.		
Storage & Stability:	Stable at 2-4°C for six months after reconstitution. DO NOT FREEZE.		

A typical staining pattern with the B-F1 monoclonal antibody of lymphocytes



NOT FOR HUMAN USE. FOR RESEARCH ONLY. NOT FOR DIAGNOSTIC OR THERAPEUTIC USE.

