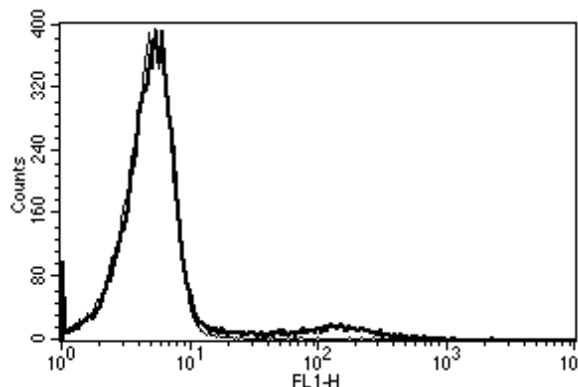


Mouse Anti-Human HLA Class II (DR) Clone B-F1 mAb

Catalog No.	CDM339	Quantity:	200 tests
Description:	Mouse Anti-Human HLA Class II (DR) Clone B-F1 mAb		
Concentration:	200 tests / 2 ml		
Hybridoma:	Myeloma X63/AG.8653 x BALB/c spleen cells		
Specificity:	Recognizes a 28-33 kDa protein.		
Host:	Mouse		
Immunogen:	Chronic Lymphoid Leukemia Cells (CLL)		
Isotype:	IgG1		
Clone:	B-F1		
Formulation:	Liquid in PBS with 1% BSA and 0.1% sodium azide. Precaution: Sodium azide is a poisonous and hazardous substance which should be handled by trained staff only.		
Purification:	Ion exchange chromatography		
Applications:	Flow cytometry. Use 10 μ l to label 10 ⁶ cells or 100 μ l of whole blood. The optimal concentration should be determined by the user for each specific application.		
Storage & Stability:	Stable for 2-4°C for 12 months. For longer storage, freeze aliquots. Avoid repeated freeze-thaw cycles.		

A typical staining pattern with the B-F1 monoclonal antibody of lymphocytes.



NOT FOR HUMAN USE. FOR RESEARCH ONLY. NOT FOR DIAGNOSTIC OR THERAPEUTIC USE.

