

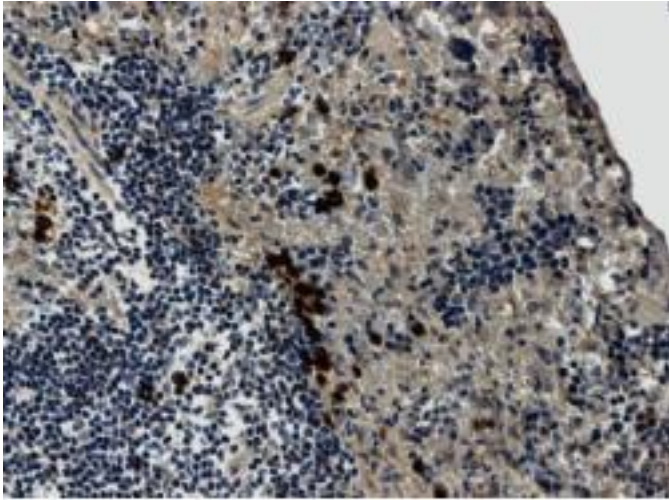
## IL1R2

### Rat Anti-Mouse IL1R2 Clone 7D7 mAb

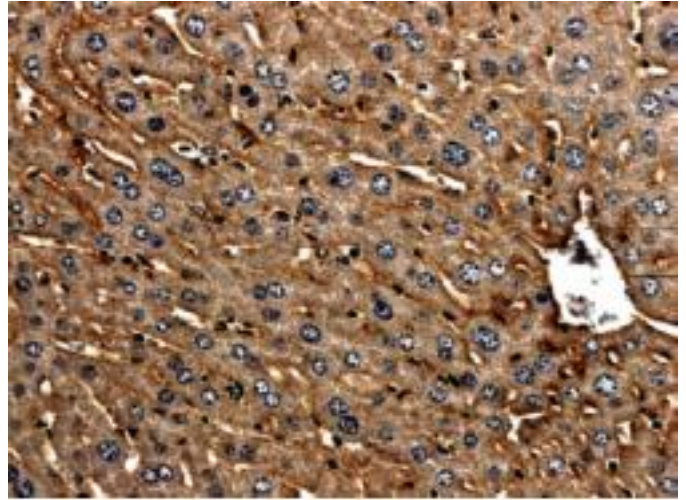
<b>Catalog No.</b>	CMI249	<b>Quantity:</b>	100 µg
<b>Alternate Names:</b>	CD121b, IL1r-2, IL-1 receptor beta chain		
<b>Description:</b>	<p>Rat Anti-Mouse IL1R2 monoclonal antibody Clone 7D7. IL1 receptor type II (IL1R-II) is a 65 kD member of the immunoglobulin superfamily also known as IL1 receptor (IL1R) type II. The IL1R family is composed of three proteins: IL1R type I, IL1R type II, and the widely expressed IL1R AcP. Both IL1R type I and type II bind IL1<math>\alpha</math> and IL1<math>\beta</math>, although with differing affinities. The high affinity complex consists of IL1R type I and IL1R AcP, whereas IL1 binds to IL1R type II with low affinity. The IL1 receptor antagonist (IL1RA) can bind to both IL1R type I and II. IL1R type II is expressed at low levels on B-cells, monocytes/macrophages, neutrophils, basal epithelia of the skin, and T-cells. Binding of IL1 to the high affinity IL1 receptor mediates thymocyte and T-cell activation, fibroblast proliferation, and induction of acute phase protein production. Binding of IL1 to CDw121b appears to be dispensable for IL1 signaling and may negatively regulate IL1 responses acting as a "decoy" receptor.</p>		
<b>Gene ID:</b>	16178		
<b>Hybridoma:</b>	Mouse myeloma fused with rat spleen cells		
<b>Specificity:</b>	Recognizes mouse IL1R2		
<b>Host:</b>	Rat		
<b>Immunogen:</b>	Recombinant extracellular domain of mouse IL1R2		
<b>Isotype:</b>	IgG		
<b>Clone:</b>	7D7		
<b>Formulation:</b>	Lyophilized from a 0.2 µm sterile filtered solution in PBS		
<b>Purification:</b>	Protein A/G affinity chromatography of tissue culture supernatant IgG fraction.		
<b>Reconstitution:</b>	<b>Centrifuge vial prior to opening.</b> Reconstitute with 200 µl sterile PBS (final concentration 500µg/ml).		
<b>Applications:</b>	Western Blot, Immunohistochemistry (paraffin)		
<b>Application Notes:</b>	<p>For Western Blot, use a working dilution of 1:1000.            For immunohistochemistry, use a working dilution of 1:50 to 1:100.            The optimal concentration should be determined by the user for each specific application.</p>		
<b>Storage &amp; Stability:</b>	Lyophilized antibody is stable for 2 years at -80°C. Reconstituted antibody is stable for six months in working aliquots at -20 to -80°C. <b>Avoid repeated freeze-thaw cycles.</b>		



IL1R2 expression in spleen from  
LPS-exposed mouse.



IL1R2 expression in liver from  
LPS-exposed mouse.



NOT FOR HUMAN USE. FOR RESEARCH ONLY. NOT FOR DIAGNOSTIC OR THERAPEUTIC USE.



**Cell Sciences®**  
480 Neponset Street  
Bldg 12A  
Canton, MA 02021

Toll Free: 888-769-1246  
Phone: 781-828-0610  
Fax: 781-828-0542

E-mail: [info@cellsciences.com](mailto:info@cellsciences.com)  
Website: [www.cellsciences.com](http://www.cellsciences.com)