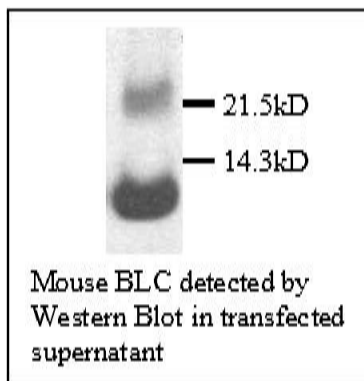


## BLC, Mouse pAb

<b>Catalog No.</b>	CPB001	<b>Quantity:</b>	200 µg
<b>Name:</b>	B-lymphocyte chemoattractant (BLC)		
<b>Description:</b>	This antibody detects BLC at 12.0 kDa.		
<b>Specificity:</b>	Mouse BLC		
<b>Host:</b>	Rabbit		
<b>Immunogen:</b>	Recombinant mouse BLC		
<b>Isotype:</b>	IgG		
<b>Formulation:</b>	Lyophilized with 0.1% sodium azide. Precaution: Sodium azide is a poisonous and hazardous substance which should be handled by trained staff only.		
<b>Purification:</b>	Protein A purified		
<b>Reconstitution:</b>	<b>Centrifuge vial prior to opening.</b> Reconstitute to 1 mg/ml by adding 200 µl of H <sub>2</sub> O.		
<b>Cross-Reactivity:</b>	Cross-reactivity to BLC of other species has not been determined.		
<b>Storage &amp; Stability:</b>	Store at 2-4°C for short term storage or at -20°C in small aliquots for long term storage. <b>Avoid repeated freeze and thaw cycles.</b>		
<b>Applications:</b>	Western blot: working dilution of 1:5,000 The optimal concentration should be determined by the user for each specific application.		



NOT FOR HUMAN USE. FOR RESEARCH ONLY. NOT FOR DIAGNOSTIC OR THERAPEUTIC USE.

