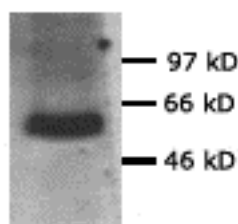


## Ctgf

### Rabbit Anti-Mouse Connective Tissue Growth Factor pAb

<b>Catalog No.</b>	CPC100	<b>Quantity:</b>	200 µg
<b>Alternate Names:</b>	CCN2, CTGRP, HCS24, IGFBP8, NOV2		
<b>Description:</b>	The polyclonal Rabbit antibody recognizes Mouse Connective Tissue Growth Factor (CTGF), a 38 kDa, cysteine rich, secreted peptide. CTGF is a mitogen that is secreted by vascular endothelial cells and plays a role in chondrocyte proliferation and differentiation, cell adhesion in many cell types, and is related to platelet-derived growth factor.		
<b>Gene ID:</b>	14219		
<b>Conjugate:</b>	Unconjugated		
<b>Specificity:</b>	Mouse CTGF		
<b>Host:</b>	Rabbit		
<b>Isotype:</b>	IgG		
<b>Immunogen:</b>	Recombinant Mouse CTGF (aa 223-348), expressed in <i>E. coli</i>		
<b>Formulation:</b>	Lyophilized with 0.05% sodium azide.		
<b>Purification:</b>	Protein A purified		
<b>Reconstitution:</b>	<b>Centrifuge vial prior to opening.</b> Reconstitute to 1 mg/mL by adding 200 µL sterile distilled water.		
<b>Cross-Reactivity:</b>	Reacts with Mouse, Rat and Human CTGF. Cross reactivity to CTGF of other species has not been determined.		
<b>Applications:</b>	Western Blot (WB), Immunohistochemistry (IHC)		
<b>Application Notes:</b>	Western Blot: 1:1000. IHC: 1:100. The optimal concentration should be determined by the user for each specific application.		
<b>Storage &amp; Stability:</b>	Store at 2-8 °C short term or in working aliquots at -20 °C for long term storage. <b>Avoid repeated freeze-thaw cycles.</b>		

Western blot detection of CTGF fusion protein in transfected supernatant



**NOT FOR HUMAN USE. FOR RESEARCH ONLY. NOT FOR DIAGNOSTIC OR THERAPEUTIC USE.**

