

## CASP12

### Rabbit Anti-Human CASP12 pAb

<b>Catalog No.</b>	CPC141A	<b>Quantity:</b>	100 µg
	CPC141B		500 µg
	CPC141C		1.0 mg

**Alternate Names:** CASP-12, CASP12P1

**Description:** Three distinct signaling pathways lead to programmed cell death (apoptosis). The death receptor and mitochondrion pathways are the main, in which the key apoptotic proteases caspase-8 and caspase-9, respectively, are involved. The endoplasmic reticulum (ER) stress is the third apoptotic pathway and caspase-12 is involved. Caspase-12 is localized to the ER but not to cytoplasm or mitochondrion. Caspase-12 is activated by ER stress, including disruption of ER calcium homeostasis, and mediates ER stress-induced apoptosis. Caspase-12 is co-localized to the ER with several proteins that are involved in Alzheimer's disease including  $\gamma$ -secretase presenilin and  $\beta$ -amyloid precursor protein (APP). Caspase-12 mediates cytotoxicity induced by amyloid- $\beta$ . Caspase-12 is ubiquitously expressed in mouse tissues.

**Gene ID:** 100506742

**Source:** Caspase-12 antibody was raised against a synthetic peptide corresponding to amino acids within the small cleavage product of murine caspase-12.

**Host:** Caspase-12 antibody (Small) was raised in rabbit. Please use anti-rabbit secondary antibodies.

**Immunogen:** Human Caspase-12 (Small) Peptide

**Positive Control:** Mouse Liver Tissue Lysate  
Rat Liver Tissue Lysate

**Formulation:** Antibody is supplied in PBS containing 0.02% sodium azide. **Precaution:** Sodium azide is a poisonous and hazardous substance which should be handled by trained staff only.

**Purification:** Affinity chromatography purified via peptide column

**Cross-Reactivity:** Human

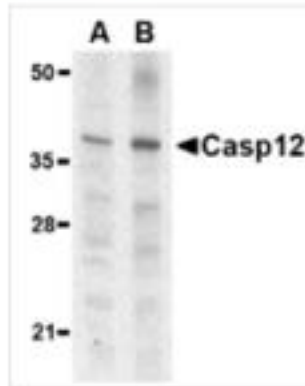
**Applications:** Caspase-12 (small) antibody can be used for the detection of both the propeptide and cleaved forms of caspase-12 by Western blot at 0.5 to 2 µg/ml.

**Application Notes:** E, WB, IHC

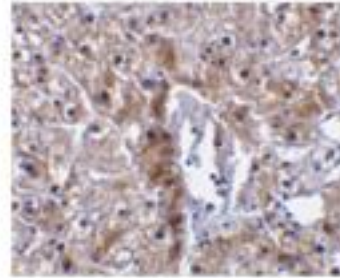
**Storage & Stability:** Caspase-12 antibody (Small) can be stored at 4°C, stable for one year. As with all antibodies care should be taken to avoid repeated freeze thaw cycles. Antibodies should not be exposed to prolonged high temperatures.



## Description



Western blot analysis of caspase-12 in mouse (lane A) and rat (lane B) liver lysate with caspase-12 antibody (small) at 1 µg/ml.



Immunohistochemical staining of human liver tissue using caspase-12 antibody (small) at 10 µg/ml.

NOT FOR HUMAN USE. FOR RESEARCH ONLY. NOT FOR DIAGNOSTIC OR THERAPEUTIC USE.



**Cell Sciences®**  
480 Neponset Street  
Bldg 12A  
Canton, MA 02021

Toll Free: 888-769-1246  
Phone: 781-828-0610  
Fax: 781-828-0542

E-mail: [info@cellsciences.com](mailto:info@cellsciences.com)  
Website: [www.cellsciences.com](http://www.cellsciences.com)