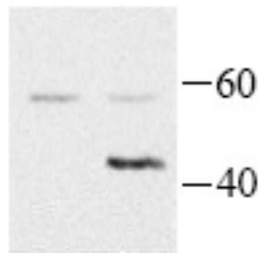


## G $\alpha_{16}$ , Human pAb

<b>Catalog No.</b>	CPG200	<b>Quantity:</b>	200 $\mu$ g
<b>Specificity:</b>	Human		
<b>Host:</b>	Rabbit		
<b>Immunogen:</b>	Recombinant Human G-alpha 16 (a.a. 237-373)		
<b>Isotype:</b>	IgG		
<b>Formulation:</b>	Lyophilized with 0.1% sodium azide. Precaution: This product contains sodium azide: a poisonous and hazardous substance.		
<b>Purification:</b>	Protein A purified		
<b>Reconstitution:</b>	<b>Centrifuge vial prior to opening.</b> Reconstitute to 1 mg/ml by adding 200 $\mu$ l H <sub>2</sub> O.		
<b>Cross-Reactivity:</b>	The antibody recognizes human G $\alpha_{16}$ and mouse G $\alpha_{15}$ , but not other G $\alpha$ proteins.		
<b>Storage &amp; Stability:</b>	2-4°C for short term storage or -20°C in small aliquots for long term storage. <b>Avoid repeated freeze-thaw cycles.</b>		
<b>Applications:</b>	Immunoprecipitation. Western blot: working dilution of 1:5,000. The optimal concentration should be determined by the user for each specific application.		

G $\alpha_{16}$  detected by Western blot in transfected HEK293 cells (right lane)



**NOT FOR HUMAN USE. FOR RESEARCH ONLY. NOT FOR DIAGNOSTIC OR THERAPEUTIC USE.**