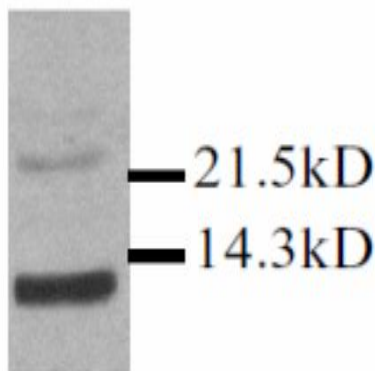


## II15

### Rabbit Anti-Mouse IL-15 pAb

<b>Catalog No.</b>	CPI100	<b>Quantity:</b>	200 µg
<b>Description:</b>	IL-15 has a molecular weight of 14-15 kDa and is a member of the four alpha-helical bundle family of cytokines. It is very similar to IL-2, except that IL-15 has an IL-15 alpha receptor subunit. It plays an important role in the growth and differentiation of T and B lymphocytes, natural killer cells, macrophages, and monocytes as well as activation of a number of important intracellular signaling molecules. This implies that IL-15 could be essential for the immune responses, allograft rejection, and the pathogenesis of autoimmune diseases.		
<b>Gene ID:</b>	16168		
<b>Specificity:</b>	Mouse IL-15		
<b>Host:</b>	Rabbit		
<b>Immunogen:</b>	Recombinant Mouse IL-15		
<b>Isotype:</b>	IgG		
<b>Formulation:</b>	Lyophilized with 0.1% sodium azide. Precaution: Sodium azide is a poisonous and hazardous substance which should be handled by trained staff only.		
<b>Purification:</b>	Protein A purified		
<b>Reconstitution:</b>	<b>Centrifuge vial prior to opening.</b> Reconstitute to 1 mg/ml by adding 200 µl sterile water.		
<b>Cross-Reactivity:</b>	Cross-reactivity to IL-15 of other species has not been determined.		
<b>Applications:</b>	Western blot: working dilution of 1:5,000. Also useful for neutralization assays. The optimal concentration should be determined by the user for each specific application.		
<b>Storage &amp; Stability:</b>	2-4°C for short term storage or -20°C in small aliquots for long term storage. <b>Avoid repeated freeze-thaw cycles.</b>		

Mouse IL-15 detected in transfectant supernatant by Western blot



NOT FOR HUMAN USE. FOR RESEARCH ONLY. NOT FOR DIAGNOSTIC OR THERAPEUTIC USE.

