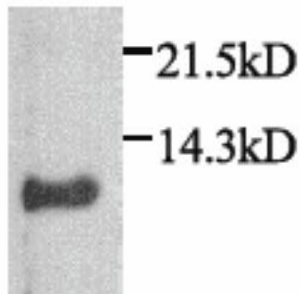


Cxcl1

Rabbit Anti-rat KC pAb

Catalog No.	CPM010	Quantity:	500 µg
Alternate Names:	CINC-1, Gro1		
Description:	<p>Rabbit Anti-rat KC polyclonal antibody.</p> <p>KC, a homolog of human and hamster gro/MGSA, is a 72-amino acid CXC chemokine originally cloned from rat macrophages and lung tissue. It is the mediator for recruitment and activation of neutrophils in rat lung inflammation models. Expression of KC can be upregulated by LPS and IL-1β stimulation. IFN-gamma blocks LPS-induced expression of KC.</p>		
Gene ID:	81503		
Specificity:	Recombinant and native rat and mouse KC/CINC-1		
Host:	Rabbit		
Immunogen:	<i>E. coli</i> expressed recombinant rat KC aa1-72		
Isotype:	IgG		
Formulation:	Lyophilized from a solution containing 0.1% sodium azide.		
Purification:	Protein A purified		
Reconstitution:	Reconstitute to 1 mg/ml by adding 500 µl distilled water.		
Cross-Reactivity:	Cross reactivity to other species not determined.		
Applications:	<p>Western blot</p> <p>Immunoprecipitation</p> <p>Neutralization</p>		
Application Notes:	<p>WB, 1:2,000-1:5,000</p> <p>IP, 1:300-1:800</p> <p>To achieve best results, titrate antibody by dilution for each application.</p>		
Storage & Stability:	<p>Store at 4°C for short term use. For long term storage, aliquot and freeze at -20°C or -80°C. Avoid repeated freeze-thaw cycles.</p>		

Rat KC detected by Western blot in the supernatant of KC-transfected cells



NOT FOR HUMAN USE. FOR RESEARCH ONLY. NOT FOR DIAGNOSTIC OR THERAPEUTIC USE.

