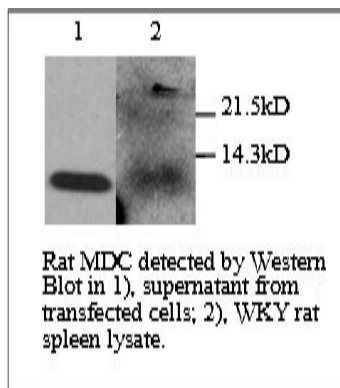


Ccl22

Rabbit Anti-Rat Macrophage-derived Chemokine pAb

Catalog No.	CPM101	Quantity:	200 µg
Alternate Names:	Mdc, Scya22, small inducible cytokine A22, small inducible cytokine subfamily A (Cys-Cys) member 22, small inducible cytokine subfamily A (Cys-Cys), member 22		
Description:	MDC (macrophage-derived chemokine) is a 69-amino acid CC chemokine with a NH ₂ -terminal sequence of 24 residues as a signal sequence. It was originally cloned from human monocyte-derived macrophages. Recombinant MDC attracts monocyte-derived dendritic cells, activated lymphocytes and natural killer cells. MDC has anti-HIV-1 activity. Expression of MDC mRNA in macrophages is enhanced by LPS, IL-1 beta and TNF-alpha. MDC is a functional ligand for CCR4.		
Gene ID:	117551		
Specificity:	Rat		
Host:	Rabbit		
Immunogen:	Recombinant Rat MDC		
Isotype:	IgG		
Formulation:	Lyophilized. Contains 0.1% sodium azide. Precaution: Sodium azide is a poisonous and hazardous substance which should be handled by trained staff only.		
Purification:	Protein A purified		
Reconstitution:	Centrifuge vial prior to opening. Reconstitute to 1 mg/ml by adding 200 µl PBS.		
Cross-Reactivity:	Reacts with rat MDC. Cross-reactivity to MDC of other species has not been determined.		
Applications:	The tested titer for Western blot is 1:2,000. The optimal concentration should be determined by the user for each specific application.		
Storage & Stability:	4°C for short term storage or -20°C in small aliquots for long term storage. Avoid repeated freeze-thaw cycles.		



NOT FOR HUMAN USE. FOR RESEARCH ONLY. NOT FOR DIAGNOSTIC OR THERAPEUTIC USE.

