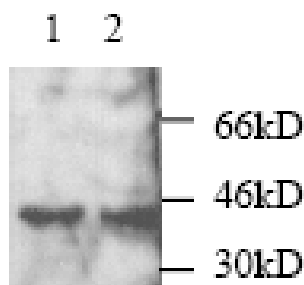


Rabbit Anti-Human MKK3 Polyclonal Antibody

Catalog No.	CPM500	Quantity:	200 µg
Alternate Names:	Dual specificity mitogen activated protein kinase kinase 3, ERK kinase 3, MAP kinase kinase 3, MAP2K 3, MAPK kinase 3, MAPKK 3, MEK 3, Mitogen activated protein kinase kinase 3, MKK 3, mMKK 3b, MPK 3, PRKMK 3, zMKK 3		
Description:	MKK3 is a protein kinase that phosphorylates the p38 MAPK but not ERK MAPK. Phosphorylation by MKK3 occurs on threonine and tyrosine residues and increases the activity of p38 to stimulate transcription factors ATF2 and Elk-1. MKK3, together with MKK6, serve as upstream regulators of p38 MAPK activation. A structural variant, MKK3b, has been identified that contains 29 more amino acids at its N-terminus.		
Specificity:	Human		
Host:	rabbit		
Immunogen:	Recombinant Full Length Human MKK3		
Isotype:	IgG		
Formulation:	Lyophilized with 0.1% sodium azide. Precaution: Sodium azide is a poisonous and hazardous substance which should be handled by trained staff only.		
Purification:	Protein A purified		
Reconstitution:	Centrifuge vial prior to opening. Reconstitute to 1 mg/ml by adding 200 µl PBS.		
Cross-Reactivity:	Cross-reactivity to other kinases has not been determined.		
Storage & Stability:	4°C for short term storage or -20°C in small aliquots for long term storage. Avoid repeated freeze-thaw cycles.		
Applications:	The antibody has been tested on Western blot and immunoprecipitation assays. Suggested dilution: 1: 2,000.		

Western blot detection of MKK3 protein in RAW cell (1) and RBL transfected with NIK(2).



NOT FOR HUMAN USE. FOR RESEARCH ONLY. NOT FOR DIAGNOSTIC OR THERAPEUTIC USE.