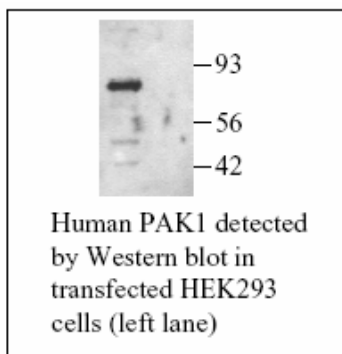


Rabbit Anti-human PAK1 Polyclonal Antibody

Catalog No.	CPP400	Quantity:	200 µg
Alternate Names:	p21 Activated Protein Kinase I pAb		
Description:	Human p21-GTPase activated protein kinase 1 (PAK1) is a functional homolog of STE20 of <i>Saccharomyces cerevisiae</i> . PAK1 is a downstream effector of the Rho-family small GTPases Rac and Cdc42. A serine/threonine kinase, PAK1 induces the formation of filopodia and lamellipodia in Swiss 3T3 cells. PAK1 inhibits myosin light chain kinase, and appears to play a role in the regulation of apoptosis by phosphorylating the death agonist Bad. Membrane targeting of PAK1 induces neurite outgrowth. PAK1 may also regulate NF-κB activation.		
Specificity:	Human PAK1		
Host:	Rabbit		
Immunogen:	Recombinant Human PAK1 (a.a. 333-545)		
Isotype:	IgG		
Formulation:	Lyophilized. Protein A purified rabbit IgG with 0.1% sodium azide. Precaution: Sodium azide is a poisonous and hazardous substance which should be handled by trained staff only.		
Purification:	Protein A affinity chromatography.		
Reconstitution:	Centrifuge vial prior to opening. Reconstitute to 1 mg/ml by adding 200 µl PBS.		
Cross-Reactivity:	Cross-reactivity with PAK from other species has not been determined.		
Storage & Stability:	4°C for short term storage or -20°C in small aliquots for long term storage. Avoid repeated freeze-thaw cycles.		
Applications:	Western Blotting: 1:5000 Immunoprecipitation		

The optimal concentration should be determined by the user for each specific application.



NOT FOR HUMAN USE. FOR RESEARCH ONLY. NOT FOR DIAGNOSTIC OR THERAPEUTIC USE.