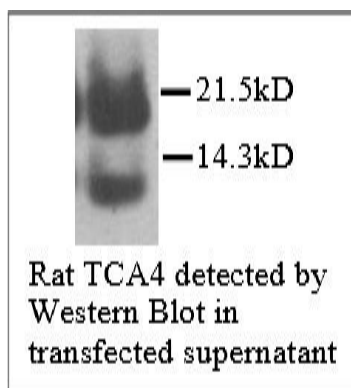


## Rabbit Anti-Rat SLC pAb

<b>Catalog No.</b>	CPS100	<b>Quantity:</b>	200 µg
<b>Alternate Names:</b>	6 Ckine, Ck-beta-9, SCYA21, Exodus-2, Secondary Lymphoid-Tissue Chemokine, TCA-4 (T-cell activation-4), CCL21		
<b>Description:</b>	SLC (secondary lymphoid-tissue chemokine, also called 6Ckine, TCA4, Exodus-2) is a 111-amino acid (human; 110 a.a. for mouse) CC chemokine with an NH <sub>2</sub> -terminal sequence of 23 residues as a signal sequence. It was originally cloned in 1997. Recombinant SLC attracts T-, B- cells, mature dendritic cell, but did not induce any cell migration in neutrophils or monocytes. SLC is a functional ligand for CCR7.		
<b>Specificity:</b>	Rat		
<b>Host:</b>	Rabbit		
<b>Immunogen:</b>	Recombinant Rat SLC		
<b>Isotype:</b>	IgG		
<b>Formulation:</b>	Lyophilized with 0.1% sodium azide. Precaution: Sodium azide is a poisonous and hazardous substance which should be handled by trained staff only.		
<b>Purification:</b>	Protein A purified		
<b>Reconstitution:</b>	<b>Centrifuge vial prior to opening.</b> Reconstitute to 1 mg/ml by adding 200 µl PBS.		
<b>Cross-Reactivity:</b>	Cross-reactivity to SLC of other species has not been determined.		
<b>Applications:</b>	<b>Western blot:</b> 1:5,000. The optimal concentration should be determined by the user for each specific application.		
<b>Storage &amp; Stability:</b>	4°C for short term storage or -20°C in small aliquots for long term storage. <b>Avoid repeated freeze-thaw cycles.</b>		



NOT FOR HUMAN USE. FOR RESEARCH ONLY. NOT FOR DIAGNOSTIC OR THERAPEUTIC USE.

