

IL6

Recombinant Mouse Interleukin-6

Catalog No.	CRI130A	Quantity:	2 µg
	CRI130B		10 µg
	CRI130C		1.0 mg

Alternate Names: IL-6, HGF, HSF, BSF-2, HP1, BCSF, IFNB2

Description: Interleukin-6 (IL-6) is a multifunctional protein that plays important roles in host defense, acute phase reactions, immune responses, and hematopoiesis. IL-6 is expressed by a variety of normal and transformed cells including T-cells, B-cells, monocytes/macrophages, fibroblasts, hepatocytes, keratinocytes, astrocytes, vascular endothelial cells, and various tumor cells. The production of IL-6 is upregulated by numerous signals including mitogenic or antigenic stimulation, LPS, calcium ionophore, IL-1, IL-2, IFN, TNF, PDGF, and viruses. IL-6 expression in monocytes is inhibited by IL-4 and IL-13.

Recombinant Mouse IL-6 is a single non-glycosylated polypeptide chain containing 188 amino acids.

Gene ID: 16193

Source: *E. coli*

Molecular Weight: ~ 21.7 kDa

Formulation: Lyophilized from a 0.2 µm sterile filtered solution of PBS, pH 7.4.

Purity: >97% by SDS-PAGE and HPLC

Endotoxin Level: <1 EU/µg as determined by LAL method.

Biological Activity: Fully biologically active when compared to standard. The ED₅₀ as determined by the dose-dependent stimulation of the proliferation of IL-6-dependent murine 7TD1 cells is <0.02 ng/ml.

Specific Activity: >5 x 10⁷ Units/mg

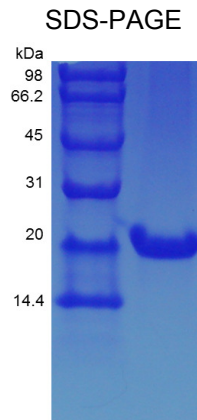
Amino Acid Sequence: MFPTSQVRRG DFTEDTTPNR PVYTTSQVGG LITHVLWEIV EMRKELCNGN
SDCMNDDAL AENNLKLP EI QRNDGCYQTG YNQEICLLKI SSSLLEYHSY
LEYMKNNLKD NKKDKARVLQ RDTETLIHIF NQEVKDLH KI VLPTPISNAL
LTDKLESQKE WLRTKTIQFI LKSLEEF LKV TLRSTRQT

Reconstitution: **Centrifuge vial prior to opening.** Add sterile distilled water or aqueous buffer to a concentration of 0.1-1.0 mg/ml. Further dilutions should be made in appropriate buffered solutions.

Storage & Stability: The lyophilized protein is stable at 2-8°C. Upon receipt, store desiccated at -20°C. After reconstitution, the preparation is stable for up to one week at 2-8°C. For maximal stability, apportion the reconstituted preparation into working aliquots and store at -20°C to -80°C. For long term storage of reconstituted protein, it is recommended that a carrier protein such as 0.1% BSA or HSA be added. This depends on the particular application.



Avoid repeated freeze/thaw cycles.



NOT FOR HUMAN USE. FOR RESEARCH ONLY. NOT FOR DIAGNOSTIC OR THERAPEUTIC USE.



Cell Sciences[®]
65 Parker Street
Unit 11
Newburyport, MA 01950

Toll Free: 888-769-1246
Phone: 978-572-1070
Fax: 978-992-0298

E-mail: info@cellsciences.com
Website: www.cellsciences.com