

IL1B

Recombinant Rhesus Macaque IL-1 beta/IL-1F2

Catalog No.	CRI269A	Quantity:	2 µg
	CRI269B		10 µg
	CRI269C		1.0 mg

Alternate Names: interleukin 1, beta

Description: IL-1 beta is a proinflammatory cytokine produced in a variety of cells including monocytes, tissue macrophages, keratinocytes and other epithelial cells. Both IL-1 alpha and IL-1 beta bind to the same receptor and have similar if not identical biological properties. These cytokines have a broad range of activities including, stimulation of thymocyte proliferation by inducing IL-2 release, B-cell maturation and proliferation, mitogenic FGF-like activity, and the ability to stimulate the release of prostaglandin and collagenase from synovial cells. However, whereas IL-1 beta is a secreted cytokine, IL-1 alpha is predominantly a cell-associated cytokine. The 17 kDa mature Rhesus IL-1 beta shares 96% aa sequence identity with Human IL-1 beta.

Gene ID: 704701

Source: *E. coli*

Molecular Weight: 17.3 kDa

Formulation: Lyophilized from a 0.2 µm filtered concentrated solution in PBS, pH 7.4.

Purity: >98% by SDS-PAGE and HPLC analyses

Endotoxin Level: Less than 1EU/µg of rRhIL-1 beta as determined by LAL method.

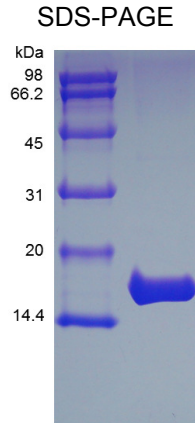
Biological Activity: Fully biologically active when compared to standard. The ED₅₀ as determined by the dose-dependant stimulation of D10.G4.1 mouse helper T cells is typically 3-10 pg/mL.

Amino Acid Sequence: APVRS LHCTL RDAQLKSLVM SGPYELKALH LQGQDLEQQV VFMSMSFVQGE
ESNDKIPVAL GLKAKNLYLS CVLKDDKPTL QLESVDPKNY PKKKMEKRFV
FNKIEINNKL EFESAQFPNW YISTSQAENM PVFLGGTRGG QDITDFTMQF VSS

Reconstitution: **Centrifuge vial prior to opening.** Reconstitute in sterile distilled water or aqueous buffer containing 0.1% BSA to a concentration of 0.1-1.0 mg/ml. Stock solutions should be divided into working aliquots and stored at -80 °C. Further dilutions should be made in appropriate buffered solutions.

Storage & Stability: The lyophilized protein is stable at 2-4°C, but should be kept desiccated at -20°C for long term storage. After reconstitution, the protein is stable for 1 week at 2-4°C. For long term storage, aliquot and freeze at -80°C. **Avoid repeated freeze-thaw cycles.**





NOT FOR HUMAN USE. FOR RESEARCH ONLY. NOT FOR DIAGNOSTIC OR THERAPEUTIC USE.



Cell Sciences[®]
65 Parker Street
Unit 11
Newburyport, MA 01950

Toll Free: 888-769-1246
Phone: 978-572-1070
Fax: 978-992-0298

E-mail: info@cellsciences.com
Website: www.cellsciences.com