

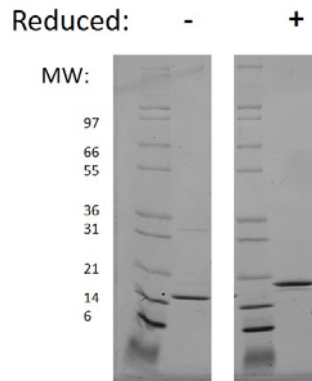
## KITLG

### Recombinant Human KIT Ligand/Stem Cell Factor

<b>Catalog No.</b>	CRS200A CRS200B CRS200C	<b>Quantity:</b>	2 µg 10 µg 1.0 mg
<b>Alternate Names:</b>	KITLG,C-Kit Ligand, SCF, MGF, Steel Factor		
<b>Description:</b>	Stem cell factor (SCF), is a cytokine made by fibroblasts and endothelial cells. SCF binds to the receptor c-Kit/CD117 and plays a critical role in the maintenance, survival, and differentiation of hemaopietic stem cells. While human SCF shows no activity on murine cells, murine and rat SCF are active on human cells.		
<b>Gene ID:</b>	4254		
<b>UniProtKB:</b>	P21583		
<b>Source:</b>	<i>E. coli</i>		
<b>Molecular Weight:</b>	monomer, 18.6 kDa (165 aa)		
<b>Formulation:</b>	Lyophilized from a sterile filtered solution containing 10 mM sodium phosphate, 50 mM sodium chloride, pH 7.5		
<b>Purity:</b>	>95% by reducing and non-reducing SDS-PAGE		
<b>Endotoxin Level:</b>	<0.05 EU/µg		
<b>Biological Activity:</b>	The ED <sub>50</sub> determined by a cell proliferation assay using human TF-1 cells is 1 ng/mL.		
<b>Specific Activity:</b>	1.0 x 10 <sup>6</sup> U/mg		
<b>Amino Acid Sequence:</b>	MEGICRNRVT NNVKDVTKLV ANLPKDYMIT LKYVPGMDVL PSHCWISEMV VQLSDSLTDL LDKFSNISEG LSNYSIIDKL VNIVDDLVEC VKENSSKDLK KSFKSPEPRL FTPEEFFRIF NRSIDAFKDF VVASETSDCV VSSTLSPEKD SRVSVTKPFM LPPVA		
<b>Reconstitution:</b>	<b>Centrifuge vial prior to opening.</b> Add sterile distilled water to reconstitute to a recommended concentration of 0.1 mg/mL and gently pipet solution up and down sides of vial. <b>DO NOT VORTEX.</b> Allow several minutes for reconstitution. A small amount of precipitate may be seen.		
<b>Storage &amp; Stability:</b>	Upon receipt, store desiccated at -20 °C for up to one year. Upon reconstitution, store at 2-8 °C for up to one month. For long term storage, reconstitute in working aliquots in 0.1% BSA solution and store at -80 °C. <b>Avoid repeated freeze-thaw cycles.</b>		



gel, stained with Coomassie Blue.



NOT FOR HUMAN USE. FOR RESEARCH ONLY. NOT FOR DIAGNOSTIC OR THERAPEUTIC USE.



**Cell Sciences®**  
65 Parker Street  
Unit 11  
Newburyport, MA 01950

Toll Free: 888-769-1246  
Phone: 978-572-1070  
Fax: 978-992-0298

E-mail: [info@cellsciences.com](mailto:info@cellsciences.com)  
Website: [www.cellsciences.com](http://www.cellsciences.com)