

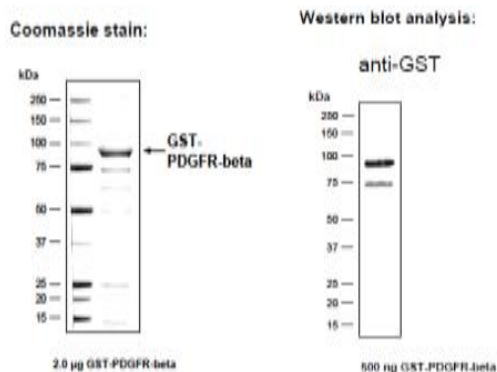
## PDGFRB

### Recombinant Human PDGFR-beta, Active, GST-tagged

<b>Catalog No.</b>	CSI12237A CSI12237B CSI12237C	<b>Quantity:</b>	10 µg 100 µg 1 mg
<b>Alternate Names:</b>	Platelet-Derived Growth Factor Receptor beta, CD140B, IBGC4, IMF1, JTK12, KOGS, PDGFR, PDGFR-1, PDGFR1, PENTT		
<b>Description:</b>	<p>PDGFR-beta is a cell surface tyrosine kinase receptor for members of the platelet-derived growth factor family. These growth factors are mitogens for cells of mesenchymal origin. The PDGF isoforms AA, BB, AB, CC, and DD are dimeric molecules. They bind two receptor molecules simultaneously and dimerize them upon binding. PDGFR-alpha binds the A, B, and C chains of PDGF with high affinity, whereas PDGFR-beta binds the B and D chain with high affinity.</p> <p>Recombinant Human PDGFR-beta, C-terminal fragment contains amino acids R561-L1106 (the cytoplasmic domain) with an N-terminal GST tag with a FactorXa cleavage site.</p>		
<b>Gene ID:</b>	5159		
<b>Protein Accession No:</b>	P09619		
<b>Concentration:</b>	~0.2 µg/µl (Bradford vs. BSA)		
<b>Source:</b>	Baculovirus-infected Sf9 insect cells		
<b>Molecular Weight:</b>	~88 kDa (theoretical MW of fusion protein)		
<b>Formulation:</b>	50 mM HEPES pH 7.5 + 100 mM NaCl + 5 mM DTT + 4 mM reduced glutathione + 20% glycerol.		
<b>Purification:</b>	GST-Affinity Chromatography		
<b>Product Identity:</b>	Confirmed by mass spectroscopy LC-ESI-MS/MS		
<b>Activation:</b>	Not activated by special procedures.		
<b>Specific Activity:</b>	Kinase activity: ~46 pmol/µg×min (P <sub>i</sub> transfer) ATP-K <sub>M</sub> : ~1 µM		

**Amino Acid Sequence:** MSPILGYWKI KGLVQPTRLL LEYLEEKYEE HLYERDEGDK WRNKKFELGL  
EFPNLPYYID GDVKLTQSMA IIRYIADKHN MLGGCPKERA EISMLEGAVL  
DIRYGVSRIA YSKDFETLKV DFLSKLPEML KMFEDRLCHK TYLNGDHVTH  
PDFMLYDALD VVLYMDPMCL DAFPKLVCFK KRIEAIQID KYLKSSKYIA  
WPLQGWQATF GGGDHPPK*SD* LIEGRGIPGN SRYEIRWKVI **ESVSSDGHEY**  
**IYVDP**MQLPY **DSTWELPRDQ** LVLGRTLGS**G** AFGQVVEATA HGLSHSQATM  
**KVAVKMLKST ARSSEKQALM SELKIMSHLG** PHLNVVNL**LG** ACTKGGPIYI  
**ITEYCRYGDL VDY**LHRNKHT FLQHHSDKRR PPSAELYSNA LPVGLPLPSH  
**VSLTGESDGG YMDMSKDES**V DYVPLMDMKG DVKYADIESS NYMAPYDNYV  
**PSAPERTCRA T**LINE**SPVLS YMDLVGFSYQ** VANGMEFLAS KNCVHRDLAA  
**RNVLICEGKL VKICDFGLAR DIMRDSNYIS** KGSTFLPLKW MAPESIFNSL  
**YTTLSDVWSF GILLWEIFTL GGTPYELPM** NEQFYNAIKR GYRMAQPAHA  
**SDEIYEIMQK CWEEKFEIRP PFSQLVLLLE** RLLGEGYKKK YQQVDEEFLR  
**SDHPAILRSQ ARLPGFHGLR SPLDTSSVLY** TAVQPNEGDN DYIIPDPK  
**PEVADEGPLE GSPSLASSTL NEVNTSSTIS** CDSPLEPQDE PEPEPQLELQ  
**VEPEPELEQL PDSGCPV**PRA EAEDSFL  
 1-218 (underlined): GST    *Italic*: Factor Xa cleavage site  
 bold: PDGFR-beta fragment

**Storage & Stability:** Store in working aliquots at -80°C. **Avoid repeated freeze-thaw cycles.**



NOT FOR HUMAN USE. FOR RESEARCH ONLY. NOT FOR DIAGNOSTIC OR THERAPEUTIC USE.