

HTRA2

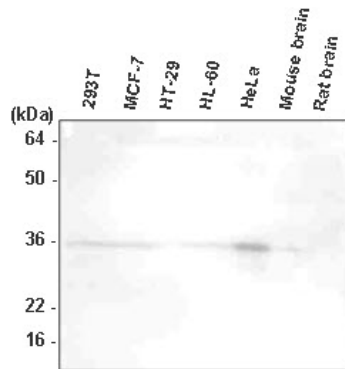
Anti-Human HtrA2 Clone 1B3 mAb

Catalog No.	CSI15563A CSI15563B	Quantity:	50 µl 100 µl
Alternate Names:	OMI, PARK13, PRSS25, HtrA serine peptidase 2		
Description:	HtrA2 is a mammalian serine protease at high temperatures and a chaperone at low temperature. The full-length HtrA2 is synthesized as a precursor protein and then targeted to the mitochondria where it is matured by the removal of N-terminal 133 residues. Mature HtrA2 consists of a putative transmembrane domain; an inhibitor of apoptosis protein (IAP)-binding motif; a single C-terminal PDZ domain that mediates protein-protein interactions. Recently, HtrA2 has known to contribute both to caspase-dependent and caspase-independent cell death		
Concentration:	1 mg/ml		
Gene ID:	27429		
Protein Accession No.:	NP_037379		
Host:	Mouse		
Immunogen:	Recombinant human HtrA2/Omi (aa 134-458) purified from <i>E. coli</i>		
Isotype:	Mouse IgG ₁ heavy chain and κ light chain		
Clone:	Anti-human HtrA2/Omi mAb, clone 1B3, is derived from hybridization of mouse SP2/0 myeloma cells with spleen cells from BALB/c mice immunized with a recombinant human HtrA2/Omi protein.		
Formulation:	Liquid. Supplied in Phosphate-Buffered Saline (pH 7.4) with 0.1% Sodium azide. Precaution: Sodium azide is a poisonous and hazardous substance which should be handled by trained staff only.		
Purification:	By protein-G affinity chromatography		
Cross-Reactivity:	Human, mouse		
Applications:	ELISA, WB (Cell lysate)		
Application Notes:	The antibody has been tested by ELISA and Western blot analysis to assure specificity and reactivity. Since application varies, however, each investigation should be titrated by the reagent to obtain optimal results. Recommended dilution range for Western blot analysis is 1:500 ~ 2,000. Recommended starting dilution is 1:1,000.		



Storage & Stability: Can be stored at +4C. For long term storage, aliquot and store at -20C. **Avoid repeated freezing and thawing cycles.**

Western Blot Analysis: The extracts of 293T, MCF7, HT-29, HL-60, HeLa, mouse brain, and rat brain were resolved by SDS-PAGE, transferred to PVDF membrane and probed with anti-human HtrA2/Omi antibody (1:1,000). Proteins were visualized using a goat anti-mouse secondary antibody conjugated to HRP and an ECL detection system.



NOT FOR HUMAN USE. FOR RESEARCH ONLY. NOT FOR DIAGNOSTIC OR THERAPEUTIC USE.