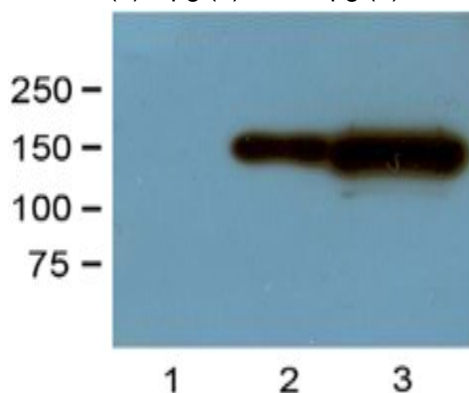


Mouse Anti-GFP Tag Clone GF28R mAb

Catalog No.	CSI20569B CSI20569C	Quantity:	100 µg 1.0 mg
Description:	Mouse Anti-GFP Tag Clone GF28R mAb		
Concentration:	1.0 mg/ml		
Specificity:	Recognizes native and denatured forms of GFP and its variants such as: EGFP, YFP, EYFP, and CFP		
Host:	Mouse		
Immunogen:	GFP from the jellyfish <i>Aequorea victoria</i> N-terminal peptide-KLH conjugates		
Isotype:	IgG1		
Clone:	GF28R		
Formulation:	Liquid in 10 mM PBS, pH 7.2.		
Purification:	Protein A affinity chromatography from mouse ascites fluid		
Applications:	Dot Blot ELISA Immunoprecipitation Immunostaining Western Blot		
Application Notes:	Western blot sensitivity(with ECL): 1-10 ng of purified GFP or GFP fusion proteins Wesern Blot (with ECL): working dilution of 1:1,000-3,000 (incubate for one hour at room temperature). Immunostaining: working dilution of 1:500-2,000. The optimal concentration should be determined by the user for each specific application.		
Storage & Stability:	Store at 2-4°C (add 0.1% NaN ₃) for several days to weeks, and at -20°C for longer periods. Avoid repeated freeze-thaw cycles.		

1:1,000 (1 µg/mL) Ab dilution probed against HEK293 cells transfected with GFP-tagged protein vector: untransfected control (1), 1µg (2) and 10µg (3) of cell lysates used.



NOT FOR HUMAN USE. FOR RESEARCH ONLY. NOT FOR DIAGNOSTIC OR THERAPEUTIC USE.

