

## Rabbit Anti-Conjugated Noradrenaline pAb

**Catalog No.** PA2006 **Quantity:** 100 µl

**Purity:** Antiserum previously pre-absorbed on protein carriers, and purified

**Form:** Lyophilized

**Host:** Rabbit

**Immunogen:** Synthetic noradrenaline conjugated to protein carriers (PC)

**Target:** Conjugated noradrenaline

**Isotype:** IgG

**Specificity:** Using a conjugate noradrenaline-PC, antibody specificity was performed with an ELISA test by competition experiments with the following compounds:

Compounds	Cross-reactivity ratio (a)
Noradrenaline-G-PC	1
Octopamine-G-PC	1/30
Dopamine-G-PC	1/70
Adrenaline-G-PC	1/180
L-DOPA-G-PC	1/>5,000
Tyramine-G-PC	1/>5,000
Noradrenaline	1/>5,000

(a) : Noradrenaline-G-PC concentration / other conjugated catecholamines concentration at half displacement ; G = Glutaraldehyde

**Applications:** Immunocytochemistry. Optimal dilutions should be determined by each laboratory for each application.

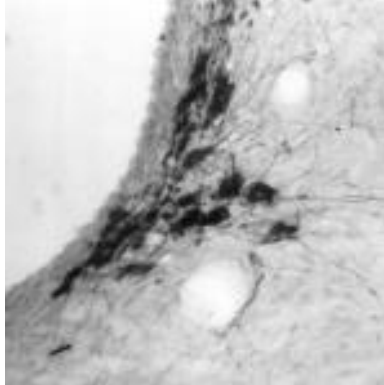
**Application Notes:** Recommended dilutions for Immunohistochemistry (1/1,000-1/5,000)  
Recommended dilutions for Western Blot (1/1,000-1/2,000)

**Storage & Stability:** Lyophilized vial must be stored at 4°C in a dry area. After reconstitution with 50 µl of distilled water and 50 µl of glycerol, the aliquot can be stored at -20°C, and is stable at least 2 years.

**Research Areas:** Neurobiology, Pharmacology, Cardiovascular research, Neuro-degenerative diseases



Noradrenaline immunoreactive body cells and fibers in the rat locus cœruleus visualized with Polyclonal anti-conjugated Noradrenaline antibodies



NOT FOR HUMAN USE. FOR RESEARCH ONLY. NOT FOR DIAGNOSTIC OR THERAPEUTIC USE.



**Cell Sciences**<sup>®</sup>  
480 Neponset Street  
Bldg 12A  
Canton, MA 02021

Toll Free: 888-769-1246  
Phone: 781-828-0610  
Fax: 781-828-0542

E-mail: [info@cellsciences.com](mailto:info@cellsciences.com)  
Website: [www.cellsciences.com](http://www.cellsciences.com)