

Rabbit Anti-Conjugated L-Glutamate pAb

Catalog No. PA2019 **Quantity:** 100 µl

Description: Polyclonal antisera were raised in rabbits after immunization with the conjugates : L-Glutamate-Glutaraldehyde-Carriers.

Purity: Antiserum previously pre absorbed on protein carriers, and purified

Form: Lyophilized

Host: Rabbit

Immunogen: Synthetic L-Glutamate conjugated to protein carrier (Pc)

Target: Conjugate L-Glutamate

Isotype: IgG

Specificity: Using a conjugate L-Glutamate-(Pc), antibody specificity was performed with an ELISA test by competition experiments with the following compounds:

Compound	Cross-reactivityratio (a)
L-Glutamate-G-(Pc)	1
D-Glutamate-G-(Pc)	1/>50,000
L-Aspartate-G-(Pc)	1/>50,000
D-Aspartate-G-(Pc)	1/>50,000
GABA-G-(Pc)	1/>100,000

(a) Glutamate-G-(Pc) concentration/other conjugated amino acid concentration at half displacement; G = Glutaraldehyde

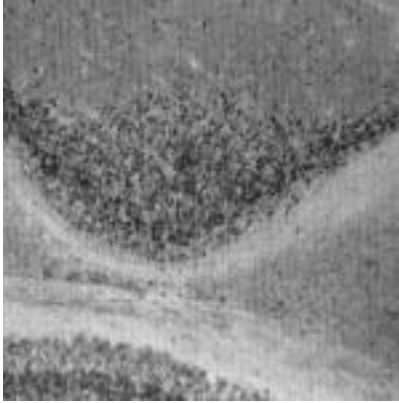
Applications: Immunocytochemistry, Immunohistochemistry

Storage & Stability: Lyophilized vial must be stored at 4°C in a dry area. After reconstitution with 50 µl of distilled water and 50 µl of glycerol, the aliquot can be stored at -20°C, and is stable at least 2 years.

Research Areas: Neurobiology, Neurodegenerative diseases, Pharmacology, Biochemistry



L.Glutamate immunoreactive cells in the granular layer of rat cerebellum visualized with Polyclonal anti-conjugated L.Glutamate antibodies (PA2019)



L.Glutamate immunoreactive cells in the rat cerebral cortex visualized with Polyclonal anti-conjugated L.Glutamate antibodies (PA2019)



NOT FOR HUMAN USE. FOR RESEARCH ONLY. NOT FOR DIAGNOSTIC OR THERAPEUTIC USE.



Cell Sciences®
480 Neponset Street
Bldg 12A
Canton, MA 02021

Toll Free: 888-769-1246
Phone: 781-828-0610
Fax: 781-828-0542

E-mail: info@cellsciences.com
Website: www.cellsciences.com