

## Rabbit Anti-Conjugated D-Serine pAb

|                     |                                                                                                                                                                                 |                  |        |
|---------------------|---------------------------------------------------------------------------------------------------------------------------------------------------------------------------------|------------------|--------|
| <b>Catalog No.</b>  | PA2047                                                                                                                                                                          | <b>Quantity:</b> | 100 µl |
| <b>Description:</b> | Polyclonal antisera were raised in rabbits after immunization with the conjugates : D-Serine-Glutaraldehyde-Carriers.                                                           |                  |        |
| <b>Target:</b>      | Conjugate D-Serine                                                                                                                                                              |                  |        |
| <b>Purity:</b>      | Antiserum previously pre absorbed on protein carriers, and purified.                                                                                                            |                  |        |
| <b>Host:</b>        | Rabbit                                                                                                                                                                          |                  |        |
| <b>Immunogen:</b>   | Synthetic D-Serine conjugated to bovine serum albumin (BSA).                                                                                                                    |                  |        |
| <b>Isotype:</b>     | IgG                                                                                                                                                                             |                  |        |
| <b>Specificity:</b> | Using a conjugate D-Serine-Glutaraldehyde-protein carrier (BSA), antibody specificity was performed with an ELISA test by competition experiments with the following compounds: |                  |        |

| Compounds         | Cross-reactivity ratio (a) |
|-------------------|----------------------------|
| D-Serine-G-BSA    | 1                          |
| L-Serine-G-BSA    | 1/> 50,000                 |
| D.Threonine-G-BSA | 1/> 50,000                 |
| L.Threonine-G-BSA | 1/> 50,000                 |
| D-Cysteine-G-BSA  | 1/> 50,000                 |
| D-Alanine-G-BSA   | 1/> 50,000                 |
| L.Glutamate-G-BSA | 1/> 50,000                 |
| L.Glutamine-G-BSA | 1/> 50,000                 |
| L.Aspartate-G-BSA | 1/> 50,000                 |
| D.Aspartate-G-BSA | 1/> 50,000                 |
| GABA-G-BSA        | 1/> 50,000                 |
| Glycine-G-BSA     | 1/> 50,000                 |
| Taurine-G-BSA     | 1/> 50,000                 |

(a): D-Serine-G-BSA concentration/other conjugated amino acids concentration at half displacement; G = Glutaraldehyde.

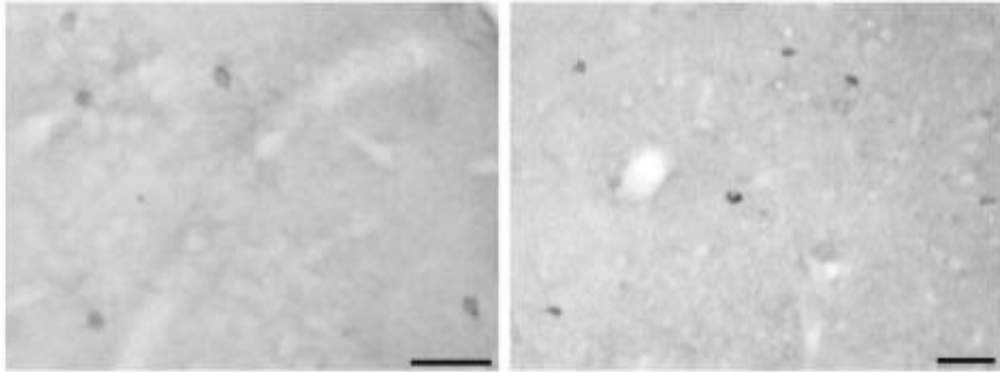
|                           |                                                                                |
|---------------------------|--------------------------------------------------------------------------------|
| <b>Formulation:</b>       | Lyophilized                                                                    |
| <b>Purification:</b>      | Antiserum previously pre-absorbed on protein carriers, and purified.           |
| <b>Applications:</b>      | Immunohistochemistry, Immunocytochemistry                                      |
| <b>Application Notes:</b> | Optimal dilutions should be determined by each laboratory for each application |



**Storage & Stability:** Lyophilized vial must be stored at 4°C in a dry area. After reconstitution with 50 µl of distilled water and 50 µl of glycerol, the aliquot can be stored at -20°C, and is stable at least 2 years.

**Research Areas:** Neuroscience (neuromodulators), Biochemistry (stereochemistry studies).

Immunocytochemical cell bodies containing D-Serine in the cerebral cortex of the rat. Scale bar: 50µm.  
Anti-conjugated antibodies (PA2047) used at 1:2500 on Paraformaldehyde/Glutaraldehyde fixed and frozen rat brain



**NOT FOR HUMAN USE. FOR RESEARCH ONLY. NOT FOR DIAGNOSTIC OR THERAPEUTIC USE.**

