

Rabbit Anti-Conjugated D-Alanine pAb

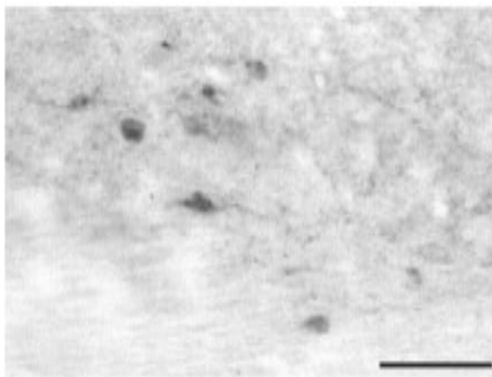
Catalog No.	PA2094	Quantity:	100 µl
Target:	Conjugated D-Alanine		
Purity:	Antiserum previously pre-absorbed on protein carriers, and ammonium sulphate purified		
Host:	Rabbit		
Immunogen:	Synthetic conjugated D-Alanine to protein carrier (Pc)		
Isotype:	IgG		
Specificity:	Using a conjugate D-Cysteine-(Pc), antibody specificity was performed with an ELISA test by competition experiments with the following compounds :		

Compounds	Cross-reactivity ratio (a)
D-Cysteine-G-BSA	1
D-Tyrosine-G-BSA	1/> 2,000
L-Cysteine-G-BSA	1/> 50,000
Taurine-G-BSA	1/> 50,000
D-Methionine-G-BSA	1/> 50,000

(a : D-Cysteine-G-BSA concentration/Other conjugated amino acids concentration at half displacement; G = Glutaraldehyde, BSA : Bovine Serum Albumin.

Formulation:	Lyophilized
Applications:	Immunocytochemistry.
Storage & Stability:	Lyophilized vial must be stored at 4°C in a dry area. After reconstitution with 50 µl of distilled water and 50 µl of glycerol, the aliquot can be stored at -20°C, and is stable at least 2 years.
Research Areas:	Neuroscience (neuromodulators), Biochemistry (stereochemistry studies).
Notes:	The optimal concentration should be determined by the user for each specific application.

D-Alanine immunoreactive cell bodies located in the lateral thalamus of the brain rat. Scale bar: 50µm. Anti-conjugated D.Alanine antibodies (PA2094) used at 1:7500 on Paraformaldehyde/Glutaraldehyde fixed and frozen rat brain



NOT FOR HUMAN USE. FOR RESEARCH ONLY. NOT FOR DIAGNOSTIC OR THERAPEUTIC USE.

cellsciences.com



Cell Sciences[®]
480 Neponset Street
Bldg 12A
Canton, MA 02021

Toll Free: 888-769-1246
Phone: 781-828-0610
Fax: 781-828-0542

E-mail: info@cellsciences.com
Website: www.cellsciences.com