

## Rat Anti-Conjugated Riboflavin pAb

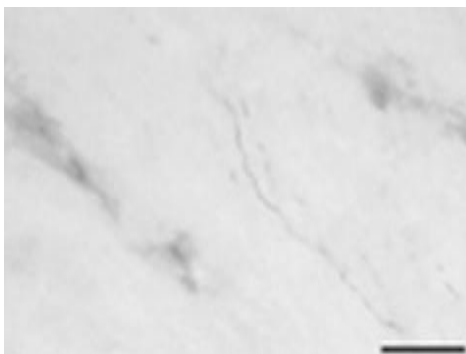
<b>Catalog No.</b>	PA2102	<b>Quantity:</b>	100 µl
<b>Target:</b>	Riboflavin (Vitamin B2)		
<b>Purity:</b>	Antiserum previously pre-absorbed on protein carriers, and purified.		
<b>Host:</b>	Rat		
<b>Immunogen:</b>	Synthetic Riboflavin conjugated to bovine serum albumin (BSA)		
<b>Isotype:</b>	IgG		
<b>Specificity:</b>	Using a conjugate Riboflavin-protein carrier (BSA), antibody specificity was performed with an ELISA test by competition experiments with the following compounds:		

Compounds	Cross-reactivity ratio (a)
Riboflavin-BSA	1
Folic acid-BSA	1/>2,600
BSA	1/>5,000

(a): Riboflavin-BSA concentration/conjugated competitors concentration at half displacement.

<b>Formulation:</b>	Lyophilized
<b>Applications:</b>	Immunohistochemistry
<b>Storage &amp; Stability:</b>	Lyophilized vial must be stored at 4°C in a dry area. After reconstitution with 50 µl of distilled water and 50 µl of glycerol, the aliquot can be stored at -20°C, and is stable at least 2 years.
<b>Research Areas:</b>	Neuroscience, biochemistry (metabolic ways).
<b>Notes:</b>	The optimal concentration should be determined by the user for each specific application.

Riboflavin immunoreactive fibers located between caudate and pulvinar nucleus of the monkey brain. Scale bar: 50µm



NOT FOR HUMAN USE. FOR RESEARCH ONLY. NOT FOR DIAGNOSTIC OR THERAPEUTIC USE.

