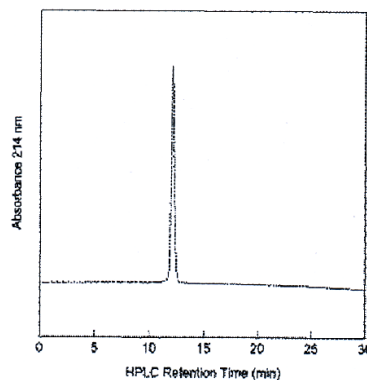


IGF1

Human [Leu⁶⁰] IGF-I Receptor Grade

Catalog No.	ABU020	Quantity:	20 µg
	ABU100		100 µg
Alternate Names:	Insulin-like Growth Factor [Leu60]		
Description:	Human [Leu ⁶⁰] IGF-I is an analog of human IGF-I which has a Leucine substitution in place of Tyrosine at position 60 of the human IGF-I sequence. [Leu60]IGF-I has normal binding to acid-stripped human serum binding proteins but has reduced binding to the type 1 IGF receptor and to the insulin receptor compared to IGF-I. It is a useful analog for studying the relative effects of IGF-I through the type 1 receptor and IGF binding proteins.		
UniProt ID:	P08069		
Gene ID:	3479		
Source:	<i>E. coli</i> expressed		
Molecular Weight:	7.6 kDa		
Formulation:	Lyophilized from 0.1 M acetic acid and stored under dry N ₂ at slight vacuum (-25 kPa)		
Purity:	> 95% by HPLC		
Endotoxin Level:	< 0.1 EU/µg		
Biological Activity:	Stimulates protein synthesis in rat L6 myoblasts: ED50 >2000 ng/ml IGF type 1 receptor binding assay: ED50 > 100 ng/ml IGF binding protein assay: ED50 < 10 ng/ml		
Amino Acid Sequence:	N-terminal sequence analysis shows 5 residues in a single sequence.		
Reconstitution:	See Protocol 1000, Handling of IGF-I, IGF-II and IGF analogs.		
Storage & Stability:	Store as supplied for up to 1 year at 2-8°C		

HPLC analysis: Reverse-phase, C₄ 2.1 mm x 10 cm column. Linear gradient 15-45% acetonitrile in H₂O, 0.1% trifluoroacetic acid.



NOT FOR HUMAN USE. FOR RESEARCH ONLY. NOT FOR DIAGNOSTIC OR THERAPEUTIC USE.