

Mouse IFN γ ELISPOT Kit,

Catalog #: CDK159A **Quantity:** 5 x 96 tests, with sterile plates **Lot #:** TBD **Expiration:** TBD

Catalog #: CDK159B **Quantity:** 10 x 96 tests, with sterile plates **Lot #:** TBD **Expiration:** TBD

NOTE: this is a sample protocol which is subject to variation by Lot Number. Refer to the protocol inserted in your package for the current lot number specifications and expiration date or contact our technical support at tech@cellsciences.com

1. INTENDED USE

The Cell Sciences[®] ELISPOT assay is based on sandwich immune-enzyme technology and can detect both secreted cytokines and single cells that simultaneously produce multiple cytokines. Cell secreted cytokines or soluble molecules are captured by coated antibodies avoiding diffusion in supernatant, protease degradation or binding on soluble membrane receptors. After cell removal, the captured cytokines are revealed by tracer antibodies and appropriate conjugates. This technique is designed to determine the frequency of cytokine producing cells under a given stimulation and the comparison of such frequency against a specific treatment or pathological state. The ELISPOT assay constitutes an ideal tool in the investigation of Th1 / Th2 responses, vaccine development, viral infection monitoring and treatment, oncology, infectious disease, autoimmune diseases and transplantation.

2. REAGENTS PROVIDED

Catalog No. / Item	Description	Preparation	Storage
CDK159B-P. 96 well PVDF-bottom plates	96 well plates	Pre-coated, use as per kit instructions	2-8 °C
CDK159B-A. Blocking Reagent, skim milk in PBS	25 mL bottle(s)	Dilute prior to use as per instructions	2-8 °C
CDK159B-B. Capture Antibody	Liquid, 500 μ L vial(s)	Sterile, dilute prior to use as per instructions	2-8 °C
CDK159B-C. Biotinylated Detection Antibody	Lyophilized, 100 μ L vial(s)	Reconstitute prior to use as per instructions	2-8 °C
CDK159B-D. Streptavidin-Alkaline Phosphatase Conjugate	Liquid, 50 μ L vial(s)	Dilute prior to use as per instructions	2-8 °C
CDK159B-E. Bovine Serum Albumin (BSA)	Lyophilized 2 g vial(s)	Dissolve to prepare Dilution Buffer as per instructions	2-8 °C
CDK159B-F. BCIP/NBT Substrate	27 mL bottle(s)	Ready to use	2-8 °C

Note: liquid milk Blocking Reagent has a shorter expiration date than other reagents in kit (as indicated on vial, **TBD**). The use of expired milk can lead to unspecific stimulation. Use any fresh skimmed milk if the one provided has expired.

3. MATERIALS/ REAGENTS REQUIRED BUT NOT PROVIDED

- Miscellaneous laboratory plastic and/or glass, if possible sterile
- Ethanol
- Cell culture reagents (e.g. RPMI-1640, L-glutamine, FCS)
- Cell stimulation reagents (PMA, Ionomycin)
- CO₂ incubator
- Tween 20
- Phosphate Buffered Saline (PBS)

Mouse IFN γ ELISPOT Kit,

4. STORAGE INSTRUCTIONS

Store the kit reagents between 2-8 °C, except uncoated plates, which can be stored at room temperature. Immediately after use, remaining reagents should be returned to cold storage 2-8 °C. The expiration date of the kit and reagents is stated on the kit box label. The expiration date of the kit components can only be guaranteed if the components are stored properly, and if, in case of repeated use of one component, the reagent is not contaminated during handling.

Please note that liquid milk Blocking Reagent has a shorter expiration date than other reagents in kit (indicated on vial, **April 30, 2018**). The use of expired milk can lead to unspecific stimulation. Use any fresh skimmed milk if the one provided has expired.

5. SAFETY AND PRECAUTIONS FOR USE

- Handling of reagents, serum, or plasma specimens should be in accordance with local safety procedures (e.g., CDC/NIH Health manual: "Biosafety in Microbiological and Biomedical Laboratories" 2009.)
- Do not eat, drink, smoke or apply cosmetics where kit reagents are used.
- Do not pipette by mouth.
- When not in use, kit components should be stored refrigerated or frozen, as indicated on the vial or bottle labels.
- All reagents should be warmed to room temperature before use.
- Cover or cap all reagents when not in use.
- Do not mix or interchange reagents between different lots.
- Do not use reagents beyond the expiration date of the kit.
- Use a clean, disposable, plastic pipette tip for each reagent, standard, or specimen addition in order to avoid cross contamination.
- Use clean plastic containers to prepare the washing solution.
- Thoroughly mix the reagents and samples before use by agitation or swirling.
- All residual washing liquid must be drained from the wells by efficient aspiration, or by decantation, followed by tapping the plate forcefully on absorbent paper. Never insert absorbent paper directly into the wells.
- When pipetting reagents, maintain a consistent order of addition from well-to-well. This will ensure equal incubation times for all wells.
- **BCIP/NBT buffer is potentially carcinogenic and should be disposed of appropriately. Caution should be taken when handling this reagent, always wear gloves.**
- Follow incubation times described in the assay procedure.

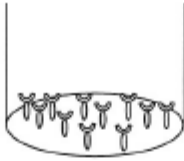
6. PRINCIPLE OF THE METHOD

A capture antibody highly specific for the analyte of interest is coated to the wells of a PVDF bottomed 96 well microtiter plate during kit manufacture. The plate is then blocked to minimize any non-antibody dependent nonspecific binding and washed. Cell suspension and stimulant are added and the plate is incubated, allowing the specific antibodies to bind any analytes produced. Cells are then removed by washing prior to the addition of biotinylated detection antibodies which bind to the previously captured analyte. Enzyme conjugated streptavidin is added, binding to the detection antibodies. Following incubation and washing, substrate is applied to the wells resulting in colored spots which can be quantified using appropriate analysis software or manually using a microscope.

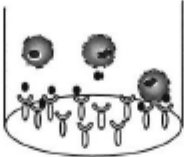
cellsciences.com

Mouse IFN γ ELISPOT Kit,

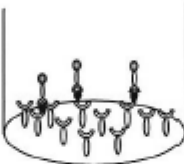
1. 96-PVDF bottomed-well plates are first treated with 35% ethanol and then coated with capture antibody.



2. Cells are incubated in the presence of the stimulating agent. Upon stimulation they release cytokines which bind to the capture antibodies.



3. Cell removal by washing. Incubation with biotinylated detection antibody.



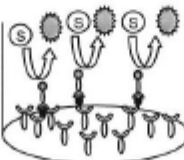
4. Any excess unbound detection antibodies is removed by washing. Incubation with streptavidin - alkaline phosphatase conjugate.





5. Any excess unbound Strep-AP is removed by washing. Incubation with BCIP/NBT.

Finally BCIP/NBT reduction by alkaline phosphatase give a precipitated product which give blue/purple spots.


One spot correspond to one single producing cell.




 Capture antibody

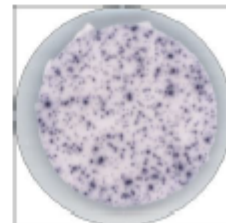
 Cytokines

 Cell

 Biotinylated detection antibody

 Streptavidin - alkaline phosphatase conjugated

 Substrate product



Mouse IFN γ ELISPOT Kit,

7. REAGENT PREPARATION

Phosphate Buffered Saline (10X concentrate solution)

For 1 liter of 10X PBS, weigh out:

80.0 g NaCl

2.0 g KH₂PO₄

14.4 g Na₂HPO₄·2H₂O.

Add distilled water to 1 liter. Check that pH is 7.4 +/- 0.1

NOTE: This is a 10X stock solution. This solution should be diluted to 1X before use.

PVDF Membrane Activation Reagent – 35% ethanol in water

For one plate, mix 3.5 mL of ethanol with 6.5 mL of distilled water.

CDK159A/B-A - Blocking Buffer - 2% skimmed milk in PBS

For one plate, dilute 5 mL of liquid milk with 5 mL of 1X PBS.

Please note liquid milk has a shorter expiration date than the other reagents of the kit (indicated on the vial). The use of expired milk can lead to unspecific stimulation. Use any fresh semi skimmed milk if the one provided has expired.

Dilution Buffer – 1% BSA (CDK159A/B-E) in PBS

For one plate, dissolve 0.2 g of BSA in 20 mL of 1X PBS.

Wash Buffer (PBST) – 0.05% Tween in PBS

For one plate dissolve 50 μ L of Tween-20 in 100 mL of 1X PBS.

CDK159A/B-B - Capture Antibody

Dilute 100 μ L of capture antibody in 10 mL of 1X PBS and mix well.

This reagent is supplied sterile. Once opened, keep the vial sterile or aliquot and store at -20 °C.

For optimal performance prepare the Capture Antibody dilution immediately before use.

CDK159A/B-C - Detection Antibody

Reconstitute the lyophilized antibody with 550 μ L of distilled water. Gently mix the solution and wait until all the lyophilized material has dissolved. To avoid nonspecific background, it is recommended to filter the working solution using a disposable syringe and a 0.2 μ m filter disc.

For one plate, dilute 100 μ L of capture antibody in 10 mL of Dilution Buffer and mix well.

If not used within a short period of time, reconstituted Detection Antibody should be aliquoted and stored at -20 °C. Under these conditions, the reagent is stable for one year. For optimal performance, prepare the reconstituted antibody dilution immediately prior to use.

CDK159a/B-D - Streptavidin-Alkaline Phosphatase (AP) Conjugate

Centrifuge vial for a few seconds to collect material in bottom of vial. For 1 plate, dilute 10 μ L Streptavidin AP Conjugate into 10 mL Dilution Buffer and mix well. To avoid nonspecific background, it is recommended to filter the working solution using a disposable syringe and a 0.2 μ m filter disc.

For optimal performance, dilute the streptavidin-alkaline phosphatase immediately prior to use. DO NOT KEEP THE DILUTIONS FOR FURTHER EXPERIMENTS

Mouse IFN γ ELISPOT Kit,

CDK159A/B-F - BCIP/NBT

The reagent is ready-to-use. It should be clear to pale yellow. If precipitates appear, filter using a disposable syringe and a 0.2 μ m filter disc.

8. SAMPLE AND CONTROL PREPARATION

Cell Stimulation

Cells can either be stimulated in the antibody-coated wells (direct stimulation) or can be first stimulated in separate plates or in flasks, harvested, and then plated into the coated wells (indirect stimulation).

The method used is dependent on

1. The type of cell assayed
2. The expected cell frequency. When a low number of cytokine-producing cells are expected, it is suggested to stimulate with the direct method. When the expected number is particularly high, it is better to use the indirect ELISpot method.

All the method steps following stimulation of the cells are the same whatever the method of stimulation chosen (direct or indirect).

Positive Assay Control, mouse IFN- γ production

We suggest the following polyclonal activation as a positive control in your assay:

Dilute mouse splenocytes in culture medium (e.g., RPMI 1640 supplemented with 2 mM L-glutamine and 10% heat inactivated fetal calf serum) containing 0.5 μ g/mL Concanavalin A and 2 ng/mL mouse IL-2. Incubate 2 days (Indirect stimulation). Take off non-adherent materials and harvest adherent cells with a cell scraper. Wash cells once.

Dilute cells in culture medium supplemented with 1 ng/mL PMA and 500 ng/mL ionomycin. Distribute 1×10^5 to 2.5×10^5 cells per 100 μ L in designated wells of an antibody coated 96-well PVDF plates and incubate for 15-20 hours in a CO₂ incubator.

For antigen-specific stimulation, the optimal concentration of the antigen and the optimal concentration of number of cells must be determined experimentally, as it depends on the frequency of cytokine-producing cells.

Negative Assay Control

Dilute mouse splenocytes in culture medium to give an appropriate cell number (same number of unstimulated cells as stimulated sample cells) per 100 μ L with no stimulation.

Samples

Dilute mouse splenocytes in culture medium and chosen stimulator (e.g., Sample, Vaccine, Peptide pool or infected cells) to give an appropriate cell number per 100 μ L.

Optimal assay performances are observed between 1×10^5 and 2.5×10^5 cells per 100 μ L.

Stimulators and incubation times can be varied depending on the frequency of cytokine producing cells, and should be optimized by the testing laboratory.

Mouse IFN γ ELISPOT Kit,

9. ELISPOT Procedure

Prepare reagents and cells as shown in sections 7 & 8.

Note: For optimal performance dilute the Streptavidin-AP immediately prior to use.

Assay Step	Details	
1.	Addition	Add 25 μ L of 35% ethanol to every well.
2.	Incubation	Incubate plate at room temperature (RT) for 30 seconds.
3.	Wash	Empty the wells by flicking the plate over a sink & gently tapping on absorbent paper. Thoroughly wash the plate 3x with 100 μ L of 1X PBS per well.
4.	Addition	Add 100 μ L of diluted Capture Antibody to every well.
5.	Incubation	Cover the plate and incubate at 4 $^{\circ}$ C overnight.
6.	Wash	Empty the wells by flicking the plate over a sink & gently tapping on absorbent paper. Thoroughly wash the plate 3x with 100 μ L of 1X PBS per well.
7.	Addition	Add 100 μ L of Blocking Buffer to every well.
8.	Incubation	Cover the plate and incubate at RT for 2 hours.
9.	Wash	Empty the wells by flicking the plate over a sink & gently tapping on absorbent paper. Thoroughly wash the plate 3x with 100 μ L of 1X PBS per well.
10.	Addition	Add 100 μ L of sample, (+) and (-) control cell suspensions to appropriate wells, with the required concentration of cells and stimulant (unless cells were previously stimulated - see section 8).
11.	Incubation	Cover the plate and incubate at 37 $^{\circ}$ C in a CO $_2$ incubator for an appropriate length of time (15-20 hours). Note: do not agitate or move the plate during this incubation.
12.	Addition	Empty the wells and remove excess solution, and then add 100 μ L of PBS-T to every well.
13.	Incubation	Incubate the plate at 4 $^{\circ}$ C for 10 minutes.
14.	Wash	Empty the wells by flicking the plate over a sink & gently tapping on absorbent paper. Thoroughly wash the plate 3x with 100 μ L of 1X PBS per well.
15.	Addition	Add 100 μ L of diluted Detection Antibody to every well.
16.	Incubation	Cover the plate and incubate at RT for 1 hour 30 min.
17.	Wash	Empty the wells as previously done, and wash the plate 3x with 100 μ L of PBS-T.
18.	Addition	Add 100 μ L of diluted Streptavidin-AP Conjugate to every well.
19.	Incubation	Cover the plate and incubate at RT for 1.5 hours.
20.	Wash	Empty the wells by flicking the plate over a sink & gently tapping on absorbent paper. Thoroughly wash the plate 3x with 100 μ L of 1X PBS-T per well.
21.	Wash	Peel off the plate bottom and wash both sides of the membrane 3x under running distilled water, once washing is complete, remove any excess solution by repeated tapping on absorbent paper.
22.	Addition	Add 100 μ L of ready-to-use BCIP/NBT buffer to every well.
23.	Development	Incubate the plate for 5-15 minutes, monitoring spot formation visually throughout the incubation period to assess sufficient color development.
24.	Wash	Empty the wells and rinse both sides of the membrane 3x under running distilled water. Completely remove any excess solution by gentle repeated tapping on absorbent paper.

Mouse IFN γ ELISPOT Kit,

9. METHOD (continued)

Reading Spots:

Allow the wells to dry and then read results. The frequency of the resulting colored spots corresponding to the cytokine producing cells can be determined using an appropriate ELISPOT reader and analysis software, or manually using a microscope.

Note: Spots may become sharper after overnight incubation at 4 °C.

Plate should be stored at RT away from direct light, but please note color may fade over prolonged periods, so read results within 24 hours.

10. PERFORMANCE CHARACTERISTICS

Reproducibility and Linearity

Intra-assay reproducibility and linearity were evaluated by measuring the spot development following the stimulation (PMA / Ionomycin) of 5 different mouse splenocytes concentrations, 12 repetitions in 1 batch. The data shows the mean spot number, range and CV for the five cell concentrations.

Cells/well	n	Mean # of Spots per well	Min.	Max	CV%
100,000	12	462	406	495	5.5
50,000 (recommended)	12	494	457	518	3.7
25,000 (recommended)	12	391	355	411	4.8
12,500	12	244	202	267	7.8
6,250	12	143	120	190	12.5

NOT FOR HUMAN USE. FOR RESEARCH ONLY. NOT FOR DIAGNOSTIC OR THERAPEUTIC USE.