

## Human IL-6 Matched Antibody Pair for ELISPOT

**Catalog No.** CDK213

**Size:** 10 x 96 tests

### **Intended Use:**

The ELISPOT is a highly specific immunoassay for the analysis of cytokine and other soluble molecule production and secretion from T-cells at a single cell level in conditions closely comparable to the *in-vivo* environment with minimal cell manipulation. This technique is designed to determine the frequency of cytokine producing cells under a given stimulation and the comparison of such frequency against a specific treatment or pathological state. The ELISPOT assay constitutes an ideal tool in the investigation of Th1 / Th2 responses, vaccine development, viral infection monitoring and treatment, cancer, infectious disease, autoimmune diseases and transplantation.

Utilizing sandwich immuno-enzyme technology, ELISPOT assays can detect both secreted cytokines and single cells that simultaneously produce multiple cytokines. Cell secreted cytokines or soluble molecules are captured by coated antibodies avoiding diffusion in supernatant, protease degradation or binding on soluble membrane receptors. After cell removal, the captured cytokines are revealed by tracer antibodies and appropriate conjugates.

**This kit has been configured for research use only and is not to be used in diagnostic procedures.**

### **2. Introduction**

#### **2.1. Summary**

Interleukin-6 (IL-6) is a multi-functional cytokine that regulates immune responses, acute phase reactions and hematopoiesis and may play a central role in host defense mechanisms. The gene for human IL-6 has been localized to chromosome 7p21. The genomic sequence has been determined. IL-6 is usually not produced constitutively by normal cells, but its expression is readily induced by a variety of cytokines, lipopolysaccharide or viral infections. The IL-6 gene product is a single chain protein with a molecular mass ranging from 21 to 28 kDa, depending on the cellular source. Extensive posttranslational modifications like N- and O-linked glycosylation as well as phosphorylation seem to account for this heterogeneity. The cDNA for IL-6 predicts a precursor protein of 212 amino acids. IL-6 is a pleiotropic cytokine produced by a variety of cells. It acts on a wide range of tissues, exerting growth-induction, growth-inhibition, and differentiation respectively, depending on the nature of the target cells.

#### **2.2. Principle of the method**

A capture antibody highly specific for the analyte of interest is coated to the wells of a PVDF bottomed 96 well microtiter plate either during kit manufacture or in the laboratory. The plate is then blocked to minimize any non-antibody dependent unspecific binding and washed. Cell suspension and stimulant are added and the plate incubated allowing the specific antibodies to bind any analytes produced. Cells are then removed by washing prior to the addition of biotinylated detection antibodies which bind to the previously captured analyte. Enzyme conjugated streptavidin is then added binding to the detection antibodies. Following incubation and washing substrate is then applied to the wells resulting in colored spots which can be quantified using appropriate analysis software or manually using a microscope.

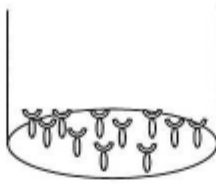



**Cell Sciences, Inc.**  
480 Neponset Street  
Building 12A  
Canton, MA 02021

Toll Free: 888 769-1246  
Phone: 781 828-0610  
Fax: 781 828-0542

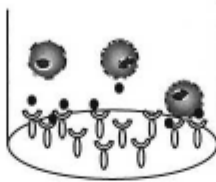
E-mail: [info@cellsciences.com](mailto:info@cellsciences.com)  
Web Site: [www.cellsciences.com](http://www.cellsciences.com)

1. 96-PVDF bottomed-well plates are first treated with 35% ethanol and then coated with capture antibody





 Capture antibody

2. Incubation of cells in the coated microwell



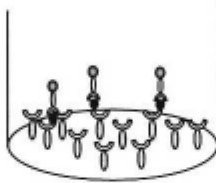
● Antigen / Mitogen

 Biotinylated detection antibody

 Streptavidin - alkaline phosphatase conjugated

 Substrate product

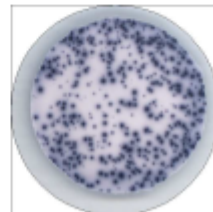
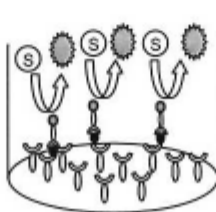
3. Cell removal by washing. Incubation with biotinylated antibody



4. Incubation with streptavidin – alkaline phosphatase conjugated



5. Addition of substrate BCIP/NBT and monitoring of spot formation.



## **Kit Contents:**

- Capture antibody, clone B-E8: 2 vials of 0.50 ml. The antibody is supplied sterile and does not contain any preservative. Sterile pipetting is strongly advised.
- Biotinylated detection antibody, clone B-E4: 2 vials, lyophilized.

## **Materials/Reagents Not Provided:**

- Miscellaneous laboratory plastic and/or glass, if possible sterile
- Streptavidin-Alkaline Phosphatase, conjugated
- Bovine Serum Albumin (BSA)
- Substrate solution (BCIP/NBT)



**Cell Sciences, Inc.**  
480 Neponset Street  
Building 12A  
Canton, MA 02021

Toll Free: 888 769-1246  
Phone: 781 828-0610  
Fax: 781 828-0542

E-mail: [info@cellsciences.com](mailto:info@cellsciences.com)  
Web Site: [www.cellsciences.com](http://www.cellsciences.com)

- Ethanol
- Cell culture reagents (e.g. RPMI-1640, L-glutamine, FCS)
- Cell stimulation reagents (LPS)
- CO<sub>2</sub> incubator
- Tween 20
- Phosphate Buffered Saline (PBS)
- 96 well PVDF bottomed plates (we recommended Millipore plates catalogue # MSIPN4510, MSIPS4510 and M8IPS4510)

## **5. Storage Instructions**

Store reagents between 2 and 8°C. Immediately after use remaining reagents should be returned to cold storage (2 to 8°C). Expiry of the components is stated on box front label and can only be guaranteed if the components are stored properly, and if in the case of repeated use of one component, the reagent is not contaminated by the first handling.

## **6. Safety & Precautions for use**

- For **research use only** not to be used as a diagnostic test.
- Handling of reagents, serum or plasma specimens should be in accordance with local safety procedures, e.g. CDC/NIH Health manual: "Biosafety in Microbiological and Biomedical Laboratories" 1984.
- Do not eat, drink, smoke or apply cosmetics where kit reagents are used.
- Do not pipette by mouth.
- When not in use, kit components should be stored refrigerated or frozen as indicated on vials or bottle labels.
- All reagents should be warmed to room temperature before use.
- Cover or cap all reagents when not in use.
- Do not mix or interchange reagents between different lots.
- Do not use reagents beyond the expiration date of the kit.
- Use a clean disposable plastic pipette tip for each reagent, standard, or specimen addition in order to avoid cross contamination.
- Use a clean plastic container to prepare the washing solution.
- Thoroughly mix the reagents and samples before use by agitation or swirling.
- All residual washing liquid must be drained from the wells by efficient aspiration or by decantation followed by tapping the plate forcefully on absorbent paper. Never insert absorbent paper directly into the wells.
- When pipetting reagents, maintain a consistent order of addition from well-to-well. This will ensure equal incubation times for all wells.
- **BCIP/NBT buffer** is potentially carcinogenic and should be disposed of Lamoureux19 appropriately; caution should be taken when handling this reagent, always wear gloves.
- Follow incubation times described in the assay procedure.

## **7. Reagent Preparation**

### **7.1. 1X Phosphate Buffered Saline (PBS) (Coating Buffer)**

For 1 liter of 10X PBS weigh-out:

80g NaCl
2g KH <sub>2</sub> PO <sub>4</sub>
14.4g Na <sub>2</sub> HPO <sub>4</sub> · 2H <sub>2</sub> O.

Add distilled water to 1 liter. Adjust the pH of the solution to 7.4 +/- 0.1 were required.



**Cell Sciences, Inc.**  
480 Neponset Street  
Building 12A  
Canton, MA 02021

Toll Free: 888 769-1246  
Phone: 781 828-0610  
Fax: 781 828-0542

E-mail: [info@cellsciences.com](mailto:info@cellsciences.com)  
Web Site: [www.cellsciences.com](http://www.cellsciences.com)

**Dilute the solution to 1X before use.**

## **7.2. Cell culture media + 10% serum (Blocking Buffer)**

For one plate, add 1 ml serum (e.g. FCS) to 9 ml of culture media (use same cell culture medium as used to derive the cell suspension).

## **7.3. 1% BSA PBS Solution (Dilution Buffer)**

For one plate, dissolve 0.2 g of BSA in 20 ml of 1X PBS.

## **7.4. 0.05% PBS-T Solution (Wash Buffer)**

For one plate, dissolve 50 µl of Tween 20 in 100 ml of 1X PBS.

## **7.5. 35% Ethanol (PVDF Membrane Activation Buffer)**

For one plate, mix 3.5 ml of ethanol with 6.5 ml of distilled water.

## **7.6. Capture Antibody**

*This reagent is supplied sterile. Once opened, keep the vial sterile or aliquot and store at -20°C. For optimal performance prepare the Capture Antibody dilution immediately before use.*

Dilute 100 µl of capture antibody in 10 ml of 1X PBS and mix well.

## **7.7. Detection Antibody**

Reconstitute the lyophilized antibody with 0.55 ml of distilled water. Gently mix the solution and wait until all the lyophilized material is back into solution.

*If not used within a short period of time, reconstituted Detection Antibody should be aliquoted and stored at -20°C. In these conditions the reagent is stable for at least one year. For optimal performance prepare the reconstituted antibody dilution immediately prior to use.*

Dilute 100 µl of antibody into 10 ml Dilution Buffer and mix well.

## **7.8. Streptavidin – AP conjugate**

Dilute in Dilution buffer according to the instructions of the supplier.

## **8. Sample and Control Preparation**

### **8.1. Cell Stimulation**

Cells can either be stimulated directly in the antibody coated wells (Direct) or, first stimulated in 24 well plates or flask, harvested, and then plated into the coated wells (Indirect).

The method used is dependent on 1) the type of cell assayed 2) the expected cell frequency. When a low number of cytokine producing cells are expected it is also advised to test them with the direct method, however, when this number is particularly high it is better to use the indirect ELISPOT method.

All the method steps following stimulation of the cells are the same whatever the method (direct/indirect) chosen.

### **8.2. Positive Assay Control, IL-6 production**

We recommend using the following polyclonal activation as a positive control in your assay.

Dilute PBMC in culture media (e.g. RPMI 1640 supplemented with 2 mM L-glutamine and 10% heat inactivated fetal calf serum) containing 1 µg/ml LPS (Sigma, Saint Louis, MO). Distribute  $1 \times 10^4$  to  $2.5 \times 10^4$  cells per 100 µl in required wells of an antibody coated 96-well PVDF plates and incubate for 15-20 hours in an incubator.

For antigen specific stimulation, the optimal concentration of the antigen and the optimal concentration of number of cells have to be determined experimentally, as it is depending on the frequency of cytokine producing cells.



### 8.3. Negative Assay Control

Dilute PBMC in culture media to give an appropriate cell number (same number of unstimulated cells as stimulated sample cells) per 100 µl with no stimulation.

### 8.4. Sample

Dilute PBMC in culture medium and stimulator of interest (i.e. Sample, Vaccine, Peptide pool or infected cells) to give an appropriate cell number per 100 µl.

Optimal assay performances are observed between  $1 \times 10^4$  to  $2.5 \times 10^4$  cells per 100 µl.

Stimulators and incubation times can be varied depending on the frequency of cytokine producing cells and therefore should be optimized by the testing laboratory.

## 9. Method

Prepare all reagents as shown in section 7 and 8.

Note: For optimal performance prepare the Streptavidin-AP dilution immediately prior to use

Assay Step	Details
1. Addition	Add 25µl of 35% ethanol to every well
2. Incubation	Incubate plate at room temperature (RT) for 30 seconds
3. Wash	Empty the wells by flicking the plate over a sink & gently tapping on absorbent paper. Thoroughly wash the plate 3x with 100µl of 1X PBS per well
4. Addition	Add 100µl of diluted capture antibody to every well
5. Incubation	Cover the plate and incubate at 4°C overnight
6. Wash	Empty the wells as previous and wash the plate once with 100µl of 1X PBS per well
7. Addition	Add 100µl of culture media with 10% serum to every well
8. Incubation	Cover the plate and incubate at RT for 2 hours
9. Wash	Empty the wells as previous and thoroughly wash once with 100µl of 1X PBS per well
10. Addition	Add 100µl of sample, positive and negative controls cell suspension to appropriate wells providing the required concentration of cells and stimulant (cells may have been previously stimulated see section 8.)
11. Incubation	Cover the plate and incubate at 37°C in a CO <sub>2</sub> incubator for an appropriate length of time (15-20 hours). <i>Note: do not agitate or move the plate during this incubation</i>
12. Addition	Empty the wells and remove excess solution then add 100µl of PBS-T to every well
13. Incubation	Incubate the plate at 4°C for 10 min
14. Wash	Empty the wells as previous and wash the plate 3x with 100µl of PBS-T
15. Addition	Add 100µl of diluted detection antibody to every well
16. Incubation	Cover the plate and incubate at RT for 1 hour 30 min
17. wash	Empty the wells as previous and wash the plate 3x with 100µl of PBS-T
18. Addition	Add 100µl of diluted Streptavidin-AP conjugate to every well
19. Incubation	Cover the plate and incubate at RT following the supplier instructions
20. Wash	Empty the wells and wash the plate 3x with 100µl of PBS-T
21. Wash	Peel of the plate bottom and wash both sides of the membrane 3x under running distilled water, once washing complete remove any excess solution by repeated tapping on absorbent paper.
22. Addition	Add 100µl of ready-to-use BCIP/NBT buffer to every well
23. Development	Incubate the plate for 5-15 min monitoring spot formation visually throughout the incubation period to assess sufficient colour development
24. Wash	Empty the wells and rinse both sides of the membrane 3x under running distilled water. Completely remove any excess solution by gentle repeated tapping on absorbent paper
<p>Read Spots: allow the wells to dry and then read results. The frequency of the resulting coloured spots corresponding to the cytokine producing cells can be determined using an appropriate ELISpot reader and analysis software or manually using a microscope. <i>Note: spots may become sharper after overnight incubation at 4°C</i></p>	

Plate should be stored at RT away from direct light, but please note colour may fade over prolonged periods so read results within 24 hours.



Cell Sciences, Inc.  
480 Neponset Street  
Building 12A  
Canton, MA 02021

Toll Free: 888 769-1246  
Phone: 781 828-0610  
Fax: 781 828-0542

E-mail: [info@cellsciences.com](mailto:info@cellsciences.com)  
Web Site: [www.cellsciences.com](http://www.cellsciences.com)

## **10. Performance Characteristics**

### **10.1. Specificity**

The assay recognizes natural human IL-6.

To define specificity, several proteins were tested for cross reactivity. There was no cross reactivity observed for any protein tested (IL-1 alpha, IL-1 beta, IL-10, IL-12, IFN-gamma, IL-4, TNF-alpha, IL-8 and IL-13). This testing was performed using the equivalent human IL-6 antibody pair in an ELISA assay.

### **10.2. Reproducibility and Linearity**

Intra-assay reproducibility and linearity were evaluated by measuring the spot development following the stimulation (LPS) of 5 different PBMC cell concentrations, 12 repetitions in 1 batch. The data shows the mean spot number, range and CV for the five cell concentrations.

Cells / well	n	Mean number of spots per well	Min	Max	CV%
10000 recommended	12	467	439	533	5.9%
5000	12	340	327	370	3.9%
2500	12	207	190	225	4.7%
1560	12	118	108	129	6.3%
625	12	64	54	76	10.4%

NOT FOR HUMAN USE. FOR RESEARCH ONLY. NOT FOR DIAGNOSTIC OR THERAPEUTIC USE.



**Cell Sciences, Inc.**  
480 Neponset Street  
Building 12A  
Canton, MA 02021

Toll Free: 888 769-1246  
Phone: 781 828-0610  
Fax: 781 828-0542

E-mail: [info@cellsciences.com](mailto:info@cellsciences.com)  
Web Site: [www.cellsciences.com](http://www.cellsciences.com)