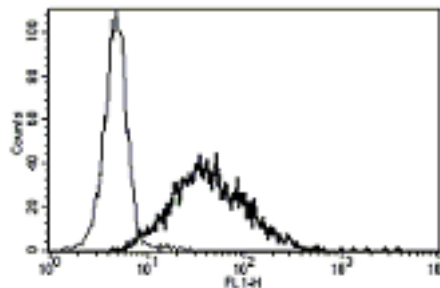


## IL2RA

### Mouse Anti-Human IL-2R subunit alpha / CD25 (Clone B-G3) Azide Free mAb

<b>Catalog No.</b>	CDM005	<b>Quantity:</b>	200 µg
<b>Alternate Names:</b>	Interleukin-2 receptor subunit alpha, IL-2 RA, p55; TAC antigen		
<b>Description:</b>	The monoclonal antibody recognizes human IL2Ra/CD25. The IL2R alpha and beta (IL2Rb) chains, together with the common gamma chain (IL2Rg), constitute the high-affinity IL2 receptor. Homodimeric alpha chains (IL2Ra) result in low-affinity receptor, while homodimeric beta (IL2Rb) chains produce a medium-affinity receptor.		
<b>UniProt ID:</b>	P01589		
<b>Gene ID:</b>	3559		
<b>Conjugate:</b>	Unconjugated		
<b>Hybridoma:</b>	Myeloma X63/AG.8653 x Balb/c spleen cells		
<b>Specificity:</b>	Human Interleukin 2 Receptor alpha chain (IL-2R $\alpha$ ), a 55 kDa protein. Recognizes both soluble and membrane-bound human IL-2R $\alpha$ .		
<b>Host:</b>	Mouse		
<b>Immunogen:</b>	PHA activated T-cells		
<b>Isotype:</b>	IgG1 $\kappa$ light chain		
<b>Clone:</b>	B-G3		
<b>Formulation:</b>	Liquid in PBS, carrier and preservative free.		
<b>Concentration:</b>	1 mg/ml		
<b>Applications:</b>	ELISA, Flow Cytometry. Not for use in functional studies.		
<b>Application Notes:</b>	The optimal concentration should be determined by the user for each specific application. No effect on mixed lymphocyte culture.		
<b>Storage &amp; Stability:</b>	Store at 2-8°C for up to one year, for long term freeze in working aliquots at -20°C to -80°C. <b>Avoid repeated freeze-thaw cycles.</b>		

A typical staining pattern with the B-G3 monoclonal antibody of PHA activated lymphocytes



**NOT FOR HUMAN USE. FOR RESEARCH ONLY. NOT FOR DIAGNOSTIC OR THERAPEUTIC USE.**

