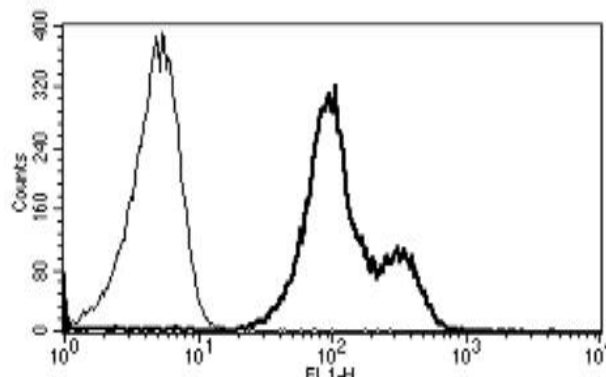


ITGAL

Mouse Anti-Human Integrin alpha-L / CD11a (Clone B-B15) mAb, Azide Free

Catalog No.	CDM027A CDM027B	Quantity:	200 µg 500 µg
Alternate Names:	CD11A, Leukocyte adhesion glycoprotein LFA-1 alpha chain, LFA-1A, Leukocyte function-associated molecule 1 alpha chain		
Description:	The mouse monoclonal antibody recognizes human Integrin alpha L/CD11a. Integrins are heterodimeric integral membrane proteins composed of an alpha chain and a beta chain. This integrin alpha L/CD11a chain and the integrin beta 2 beta chain (ITGB2) combine to form the integrin lymphocyte function-associated antigen-1 (LFA-1), which is expressed on all leukocytes. LFA-1 plays a central role in leukocyte intercellular adhesion through interactions with its ligands, intercellular adhesion molecules (ICAMs) 1-3, and also functions in lymphocyte co-stimulatory signaling.		
UnitProt ID:	P20701		
Gene ID:	3683		
Concentration:	1.0 mg/ml		
Hybridoma:	Myeloma X63/AG.8653 x Balb/c spleen cells		
Specificity:	Recognizes the αL integrin of LFA-1 complex, a 180 kDa protein.		
Immunogen:	Human PBL		
Isotype:	Mouse IgG1		
Clone:	B-B15		
Formulation:	Sterile-filtered PBS, carrier and preservative free.		
Purification:	Ion exchange chromatography		
Applications:	Flow Cytometry		
Storage & Stability:	Stable at 2-8°C for 1 year. For longer storage, freeze in aliquots at -20°C to -80°C. Avoid repeated freeze-thaw cycles.		

A typical staining pattern of lymphocytes with the anti-human Integrin alpha L/CD11a clone B-B15



cellsciences.com

NOT FOR HUMAN USE. FOR RESEARCH ONLY. NOT FOR DIAGNOSTIC OR THERAPEUTIC USE.



Cell Sciences®
65 Parker Street
Unit 11
Newburyport, MA 01950

Toll Free: 888-769-1246
Phone: 978-572-1070
Fax: 978-992-0298

E-mail: info@cellsciences.com
Website: www.cellsciences.com