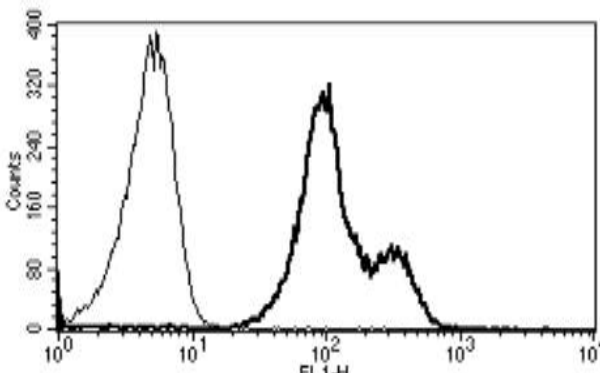


## ITGAL

### Mouse Anti-Human Integrin alpha L/CD11a (Clone B-B15) FITC mAb

<b>Catalog No.</b>	CDM028	<b>Quantity:</b>	100 tests
<b>Alternate Names:</b>	CD11A, LFA-1, LFA1A, ITGAL		
<b>Description:</b>	The mouse monoclonal antibody recognizes human Integrin alpha L/CD11a. Integrins are heterodimeric integral membrane proteins composed of an alpha chain and a beta chain. This integrin alpha L/CD11a chain and the integrin beta 2 beta chain (ITGB2) combine to form the integrin lymphocyte function-associated antigen-1 (LFA-1), which is expressed on all leukocytes. LFA-1 plays a central role in leukocyte intercellular adhesion through interactions with its ligands, intercellular adhesion molecules (ICAMs) 1-3, and also functions in lymphocyte co-stimulatory signaling.		
<b>Gene ID:</b>	3683		
<b>Concentration:</b>	100 tests/ml		
<b>Conjugate:</b>	FITC		
<b>Specificity:</b>	Recognizes the $\alpha$ L integrin of LFA-1 complex, a 180 kDa protein.		
<b>Host:</b>	Mouse		
<b>Isotype:</b>	IgG1		
<b>Immunogen:</b>	Human PBL		
<b>Clone:</b>	B-B15		
<b>Formulation:</b>	Liquid in PBS + 1% BSA + 0.1% sodium azide.		
<b>Purification:</b>	Ion exchange chromatography		
<b>Applications:</b>	Flow Cytometry		
<b>Application Notes:</b>	Use 10 $\mu$ l to label $10^6$ cells or 100 $\mu$ l of whole blood.		
<b>Storage &amp; Stability:</b>	Stable at 2-8°C for 1 year. For longer storage, freeze in aliquots at -20°C to -80°C. <b>Avoid repeated freeze-thaw cycles.</b>		

A typical staining pattern of lymphocytes with the anti-human Integrin alpha L/CD11a clone B-B15 monoclonal antibody



# cellsciences.com

NOT FOR HUMAN USE. FOR RESEARCH ONLY. NOT FOR DIAGNOSTIC OR THERAPEUTIC USE.



**Cell Sciences®**  
65 Parker Street  
Unit 11  
Newburyport, MA 01950

Toll Free: 888-769-1246  
Phone: 978-572-1070  
Fax: 978-992-0298

E-mail: [info@cellsciences.com](mailto:info@cellsciences.com)  
Website: [www.cellsciences.com](http://www.cellsciences.com)