

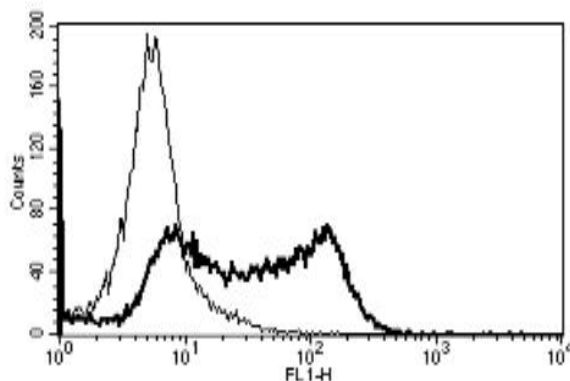
SELL

Mouse Anti-Human L-Selectin / CD62L (Clone B-S13) mAb, Azide Free

Catalog No.	CDM056A CDM056B	Quantity:	200 µg 500 µg
Alternate Names:	CD62 antigen-like family member L, Leukocyte adhesion molecule 1, LAM-1, Leukocyte surface antigen Leu-8, Leukocyte-endothelial cell adhesion molecule 1, LECAM1, Lymph node homing receptor, TQ1, gp90-MEL		
Description:	The mouse monoclonal antibody recognizes L-Selectin/CD62L, a cell surface adhesion molecule that belongs to a family of adhesion/homing receptors. It plays a role in the migration of lymphocytes into peripheral lymph nodes and sites of chronic inflammation, and of neutrophils into acute inflammatory sites.		
Gene ID:	6402		
UnitProt ID:	P14151		
Concentration:	1.0 mg/ml		
Specificity:	Recognizes L-selectin/ CD62L, the Leucocyte Endothelial Cell Adhesion Molecule-1 (LECAM-1), a 74-95 kDa protein.		
Hybridoma:	Myeloma X63/AG.8653 x Balb/c spleen cells		
Isotype:	Mouse IgG1 Kappa light chain		
Immunogen:	CD62L transfected CHO cell line		
Clone:	B-S13		
Formulation:	Sterile-filtered PBS, carrier and preservative free.		
Cross-Reactivity:	Cross reacts with mouse CD62L protein in cytometry.		
Applications:	Flow Cytometry, ELISA		
Storage & Stability:	Store at 2-8°C for 1 year. For long-term storage, freeze aliquots at -20°C to -80°C.		

Avoid repeated freeze-thaw cycles.

A typical staining pattern with the B-S13 monoclonal antibody of PBL



cellsciences.com

NOT FOR HUMAN USE. FOR RESEARCH ONLY. NOT FOR DIAGNOSTIC OR THERAPEUTIC USE.



Cell Sciences®
65 Parker Street
Unit 11
Newburyport, MA 01950

Toll Free: 888-769-1246
Phone: 978-572-1070
Fax: 978-992-0298

E-mail: info@cellsciences.com
Website: www.cellsciences.com